



# TRIMO

## Trimo accessories catalogue

comprehensive accessories selection



# General

Introducing our comprehensive catalogue of accessory materials for installing facades with Trimo products. This catalogue is designed to provide you with all the necessary details and information to make informed decisions about the accessories required for your facade installation projects.

Our accessories are thoughtfully organized by product family to make it easier for you to find what you need. The product families include Qbiss One, Qbiss Screen, Trimoterm FTV, Trimoterm FTV HL, and Trimoterm SNV. For each accessory item, you will find clear and detailed pictures, specific installation locations, thorough descriptions, and unique ordering IDs to streamline your purchasing process.

In addition to the accessory items, this catalogue also includes a list of compatible screws that can be used with Trimo products. While we provide information on these screws, we do not favor any specific type, allowing you the flexibility to choose what best suits your needs.

Please note that accessories can only be ordered in conjunction with facade/roof elements, and their availability may vary. If you have any additional questions or need further assistance, our technical support team is here to help. You can reach out to them at: [technical@trimo-group.com](mailto:technical@trimo-group.com).

We hope this catalogue serves as a valuable resource for your projects and helps you achieve the best results with Trimo products.

# Table of contents

<b>General</b>	<b>3</b>				
<b>QBISS ONE Accessories</b>	<b>7</b>	<b>QBISS SCREEN Accessories</b>	<b>20</b>	<b>TRIMOTERM FTV HL Accessories</b>	<b>30</b>
<b>Horizontal installation</b>		<b>Horizontal installation</b>		<b>5010094</b>   FTV HL Gasket PE (38,5 x 11,8 x 30)	
<b>30032065</b>   Silicone transversal gasket		<b>30032065</b>   Silicone transversal gasket		<b>30009193</b>   FTV HL Washer L=300 mm	
<b>30014372</b>   EPDM transversal gasket		<b>30014372</b>   EPDM transversal gasket		<b>TRIMOTERM SNV Accessories</b>	<b>31</b>
<b>HF40</b>   Decorative ALU extrusion		<b>HF40</b>   Decorative ALU extrusion		<b>30007657</b>   Profile filler SNV 1000 PE - positive	
<b>HF52</b>   Decorative ALU extrusion		<b>HF52</b>   Decorative ALU extrusion		<b>30007654</b>   Profile filler SNV 1000 PE - negative	
<b>30036952</b>   Gasket for HF52 alignment		<b>30030237</b>   Silicone transversal gasket		SNV Saddle washers	
<b>30006439</b>   Junction drip element (44x156)		<b>HF64</b>   Decorative ALU extrusion			
<b>30007027</b>   Junction drip element - Brick (44x92)		<b>81006837</b>   Fixing profile HF63			
<b>30025013</b>   Junction drip element - FB (44x140)		<b>30036952</b>   Gasket for HF52 alignment			
<b>30033030</b>   Load bearing fixing plate		<b>30033030</b>   Load bearing fixing plate			
<b>30006438</b>   EPDM drip element		<b>30006438</b>   EPDM drip element			
<b>30026912</b>   Stainles drip element		<b>30026912</b>   Stainles drip element			
<b>30007025</b>   EPDM cube gasket (26x26x30)		<b>30007025</b>   EPDM cube gasket (26x26x30)			
<b>30018981</b>   EPDM cube gasket (20x20x15)		<b>30018981</b>   EPDM cube gasket (20x20x15)			
<b>30025812</b>   Adhesive 600 ml, EPDM		<b>30006439</b>   Junction drip element (44x156)			
<b>30006985</b>   Sealing tape (PE 5x10)		<b>30007027</b>   Junction drip element - Brick (44x92)			
<b>Vertical installation</b>		<b>30035953</b>   Insulation tape, EPDM (1x100)			
<b>30032065</b>   Silicone transversal gasket		<b>30025812</b>   Adhesive 600 ml, EPDM			
<b>30014372</b>   EPDM transversal gasket		<b>Vertical installation</b>			
<b>HF 40</b>   Decorative ALU extrusion		<b>30032065</b>   Silicone transversal gasket			
<b>HF 52</b>   Decorative ALU extrusion		<b>30014372</b>   EPDM transversal gasket			
<b>30036952</b>   Gasket for HF52 alignment		<b>HF 40</b>   Decorative ALU extrusion			
<b>30033030</b>   Load bearing fixing plate		<b>HF 52</b>   Decorative ALU extrusion			
<b>81010514</b>   Joint profile L (20x25x1)		<b>30030237</b>   Silicone transversal gasket			
<b>30007025</b>   EPDM cube gasket (26x26x30)		<b>HF64</b>   Decorative ALU extrusion			
<b>30025812</b>   Adhesive 600 ml, EPDM		<b>81006837</b>   Fixing profile HF63			
<b>30006985</b>   Sealing tape (PE 5x10)		<b>30036952</b>   Stabilisation for HF52			
<b>30016941</b>   Butyl tape + PE (1x50x200)		<b>30033030</b>   Load bearing fixing plate			
<b>30037045</b>   Corner insert for HF52		<b>30007025</b>   EPDM cube gasket (26x26x30)			
<b>Installation kits</b>		<b>81010514</b>   Joint profile L (20x25x1)			
<b>30007109</b>   Qbiss One Installation kit B		<b>30016941</b>   Butyl tape + PE (1x50x200)			
<b>30012195</b>   Qbiss One Installation kit F		<b>30025812</b>   Adhesive 600 ml, EPDM			
<b>30018303</b>   Qbiss One Installation kit Brick		<b>30035953</b>   Insulation tape, EPDM (1x100)			
		<b>30037045</b>   Corner insert for HF52			
		<b>Installation kits</b>			
		<b>30029187</b>   Qbiss Screen H Installation kit B			
		<b>30029188</b>   Qbiss Screen H Installation kit F			
		<b>30030778</b>   Qbiss Screen H+ Installation kit B			
		<b>30030779</b>   Qbiss Screen H+ Installation kit F			
				<b>QBISS ONE Screws</b>	<b>32</b>
				Fixing through joint	
				Fixing through element	
				Fixing through longitudinal joint	
				Fixing through internal steel sheet	
				<b>QBISS SCREEN Screws</b>	<b>36</b>
				Fixing through joint	
				Fixing through internal steel sheet	
				<b>TRIMOTERM FTV Screws</b>	<b>38</b>
				<b>TRIMOTERM FTV HL Screws</b>	<b>39</b>
				<b>TRIMOTERM SNV Screws</b>	<b>40</b>
				<b>Company profile</b>	<b>41</b>
				<b>Notes</b>	<b>42</b>

**NOTE!**

The technical solutions presented in this technical catalogue are for reference only. In case of a custom application, please contact Trimo technical support.

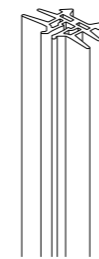
TRI  
MO

## QBISS ONE Accessories

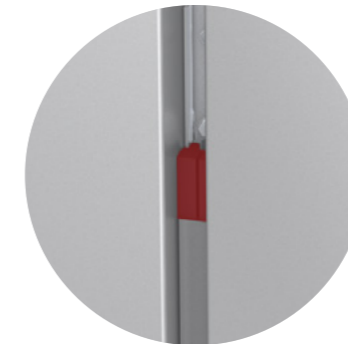
### HORIZONTAL INSTALLATION

#### 30032065 | Silicone transversal gasket

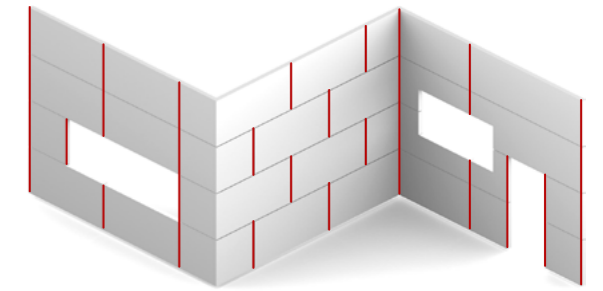
Horizontal installation



0 150 mm



Order quantity: \_\_\_\_\_ m



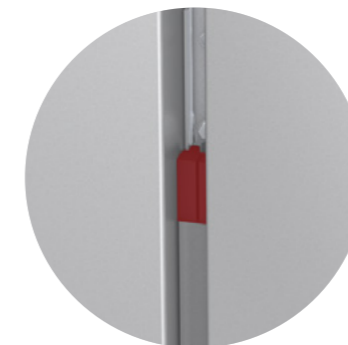
Gasket is installed together with decorative aluminium extrusion and can be prolonged anywhere along the joint with silicone adhesive (e.g. DC 7091, 30007182).

#### 30014372 | EPDM transversal gasket\*

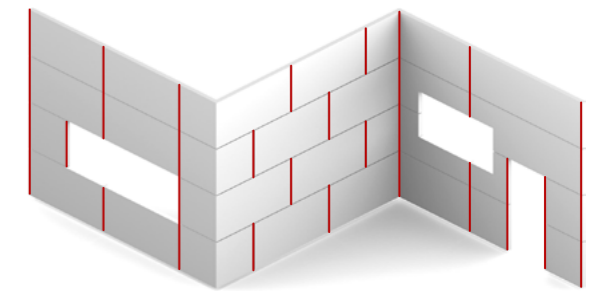
Horizontal installation



0 150 mm



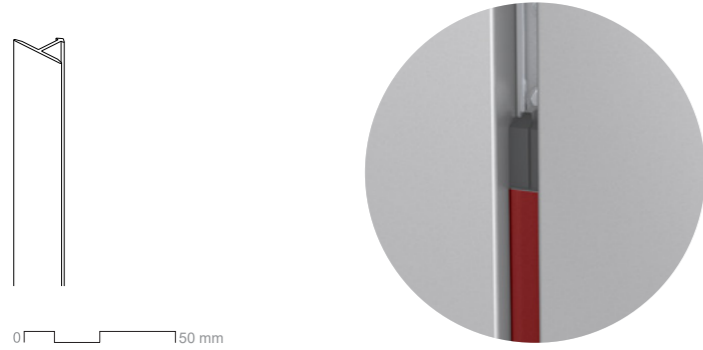
Order quantity: \_\_\_\_\_ m



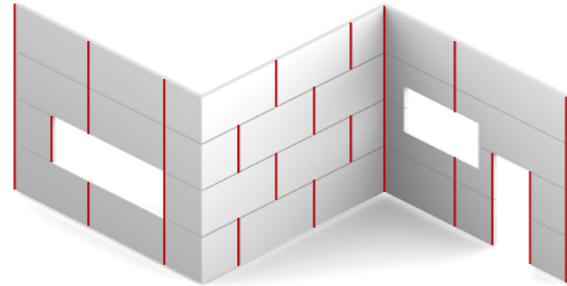
Gasket is installed together with decorative aluminium extrusion and can be prolonged anywhere along the joint with EPDM adhesive (e.g. OT015, 30025812).  
\*upon special request only

 CUTTING LIST

**HF40** | Decorative ALU extrusion  
Horizontal installation

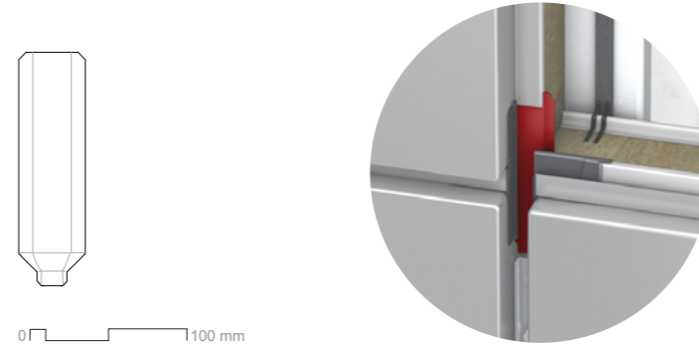


Color: \_\_\_\_\_ Order quantity: \_\_\_\_\_ pcs (L=4,0m)

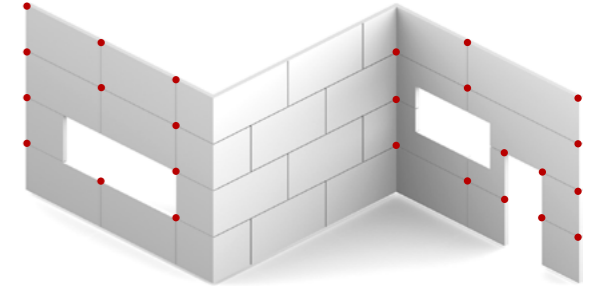


Aluminium extrusion is supplied in 4,0 m length and is installed together with transversal gasket. It can be powdercoated to match the colour of façade element, or in any other colour to expose the lines on façade.

**30006439** | Junction drip element (44x156)  
Horizontal installation

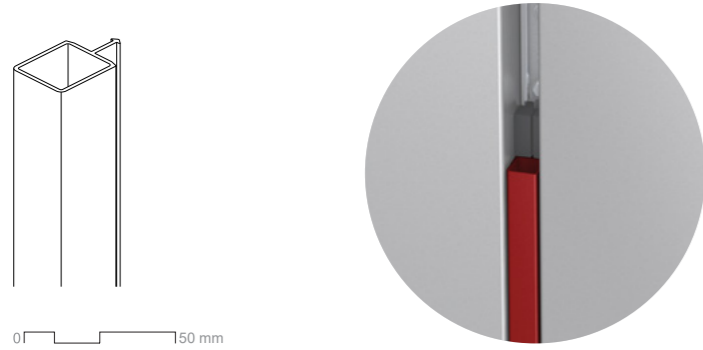


Order quantity: \_\_\_\_\_ pcs

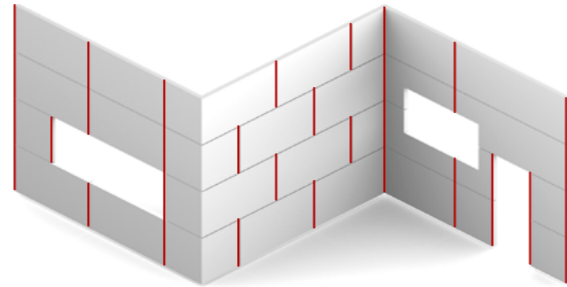


Element is installed during façade installation. Top row elements have to be cut to fit under the tophats before installation.

**HF52** | Decorative ALU extrusion  
Horizontal installation

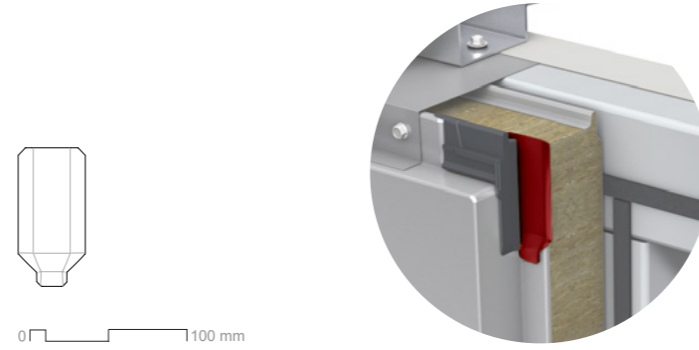


Color: \_\_\_\_\_ Order quantity: \_\_\_\_\_ pcs (L=4,0m)

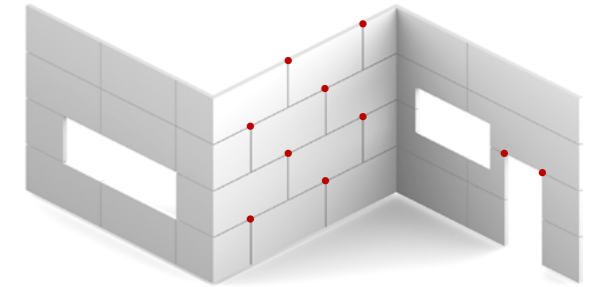


Aluminium extrusion is supplied in 4,0 m length and is installed together with transversal gasket. It can be powdercoated to match the colour of façade element, or in any other colour to expose the lines on façade.

**30007027** | Junction drip element - Brick (44x92)  
Horizontal installation



Order quantity: \_\_\_\_\_ pcs

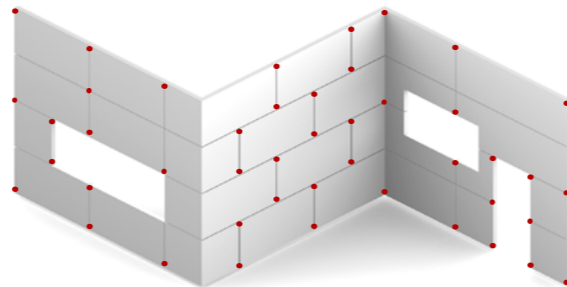


Element is installed during façade installation.

**30036952** | Gasket for HF52 alignment  
Horizontal installation



Order quantity: \_\_\_\_\_ m

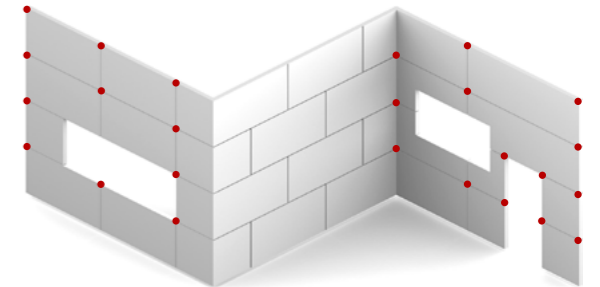


The gasket is applied to the HF52 profile just before installation into the joint to ensure that the profile is held in the center of the joint. The gasket is supplied in a continuous strap and should be cut into 2-3 cm long pieces. These pieces should be applied to both ends of the profile and at intervals of no more than 2 meters.  
Consumption: approximately 5% of the HF52 length.

**30025013** | Junction drip element - FB (44x140)  
Horizontal installation



Order quantity: \_\_\_\_\_ pcs



Element is installed during façade installation. The length is customized for joint type F-B. Top row elements have to be cut to fit under the tophats before installation.

CUTTING LIST

CUTTING LIST

**30033030** | Load bearing fixing plate  
Horizontal installation

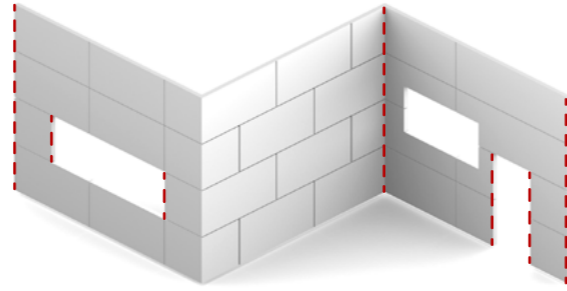
paper size: ISO A4



0 100 mm

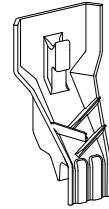


Order quantity: \_\_\_\_\_ pcs



Element is installed during façade installation. The majority of plates are preinstalled on façade elements. Where it is not, needs to be ordered separately.  
Consumption: check static calculation made for your project (2-6 pcs/panel).

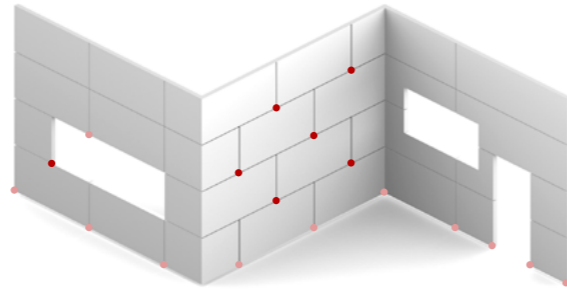
**30006438** | EPDM drip element  
Horizontal installation



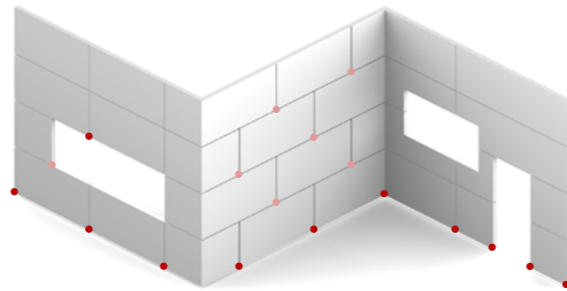
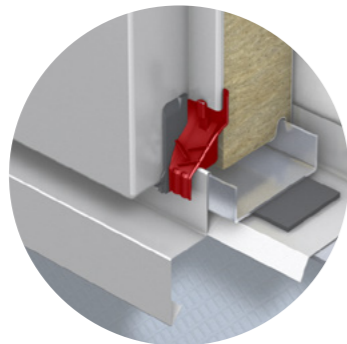
0 150 mm



Order quantity: \_\_\_\_\_ pcs

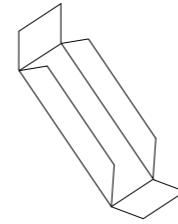


Element is installed during façade installation.

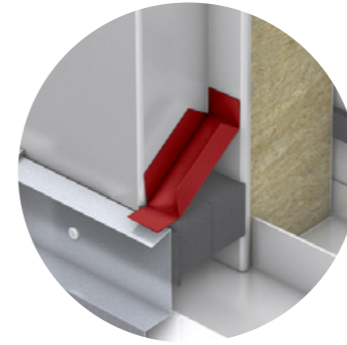


Element is installed during façade installation.

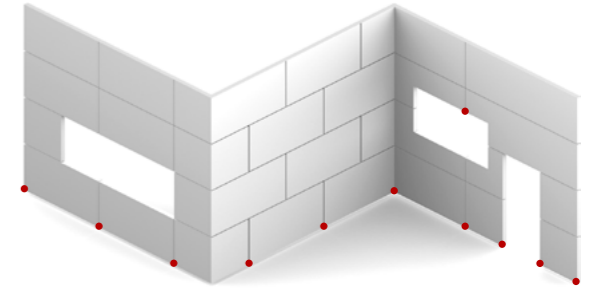
**30026912** | Stainles drip element  
Horizontal installation



0 150 mm

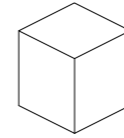


Order quantity: \_\_\_\_\_ pcs

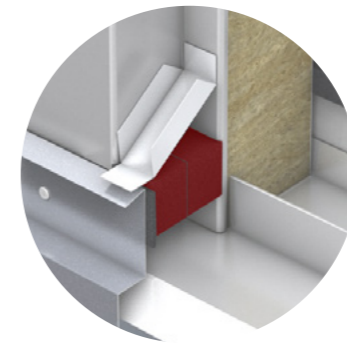


Element is installed after façade installation and should be applied to the detail only when the original Qbiss joint is absent (cut elements), ensuring proper water drainage from the detail joint.  
A mastic seal must be used for sufficient sealing.

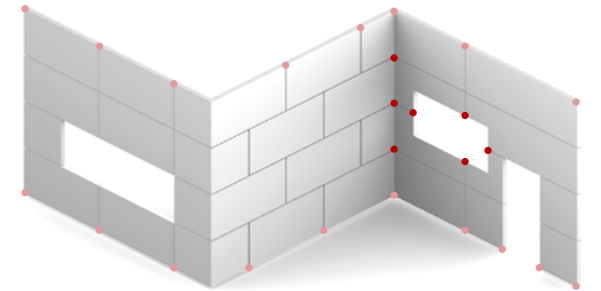
**30007025** | EPDM cube gasket (26x26x30)  
Horizontal installation



0 150 mm



Order quantity: \_\_\_\_\_ pcs



Element is installed after façade installation.

The cube gasket should be applied to the detail only when the original Qbiss joint is absent (cut elements), ensuring proper water drainage from the detail joint.

Consumption: 1 element per longitudinal joint or 2 elements per transversal joint

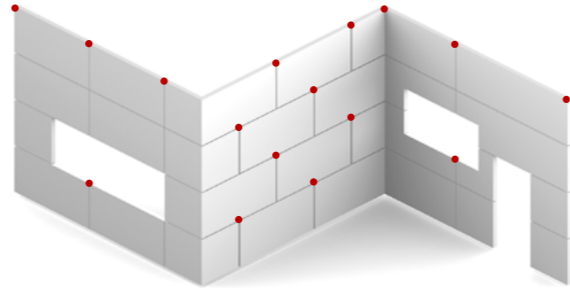
CUTTING LIST

CUTTING LIST

**30018981** | EPDM cube gasket (20x20x15)  
Horizontal installation

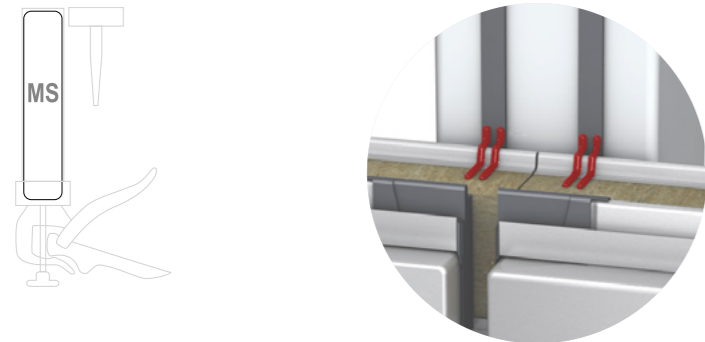


Order quantity: \_\_\_\_\_ pcs



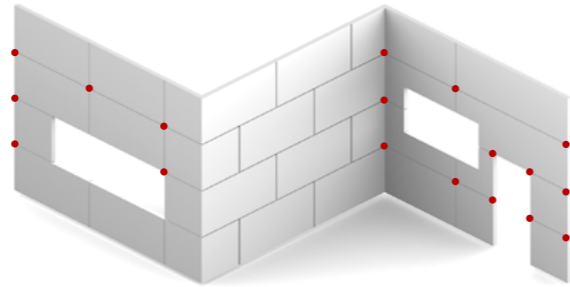
Element is installed on top part of HF52 verticals to prevent water to enter inside.

**30025812** | Adhesive 600 ml, EPDM (foil pack)\*  
Horizontal installation



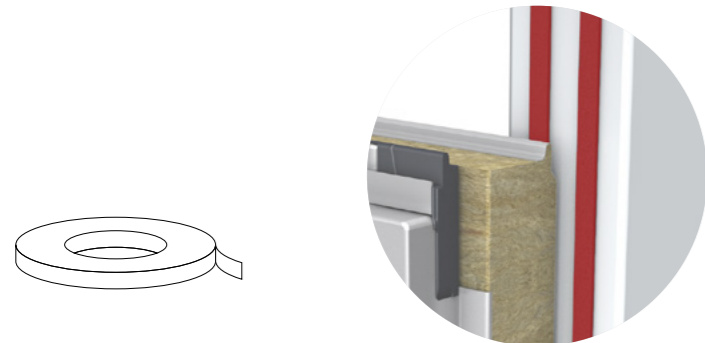
\*black  
30024863 white / 30025811 grey  
application gun not provided

Order quantity: \_\_\_\_\_ pcs

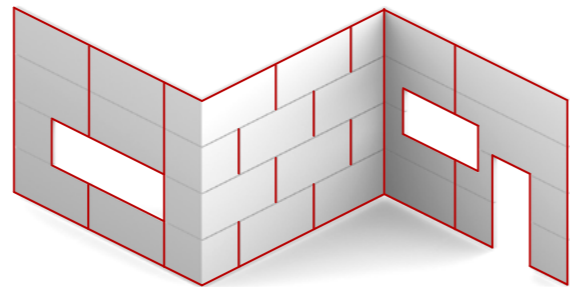


Element is installed during façade installation.  
Consumption:  
approx. 1 pcs/20 m or 1 pcs/100 elements.

**30006985** | Sealing tape (PE 5x10)  
Horizontal installation



Order quantity: \_\_\_\_\_ pcs

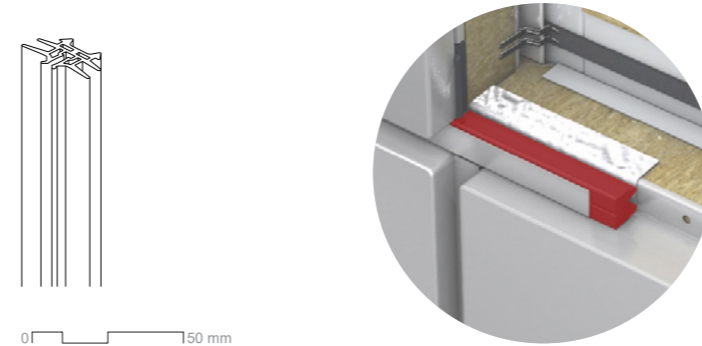


Element is installed before façade installation.  
Its main purpose is to assure air- and vapour-tightness.

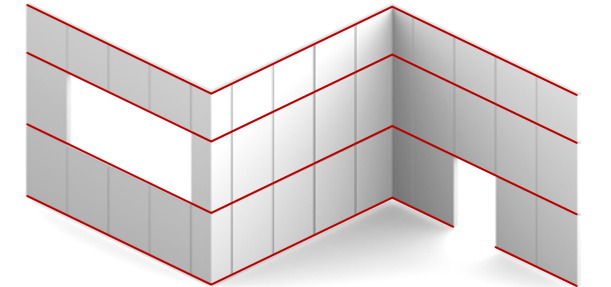
CUTTING LIST

**VERTICAL INSTALLATION**

**30032065** | Silicone transversal gasket  
Vertical installation

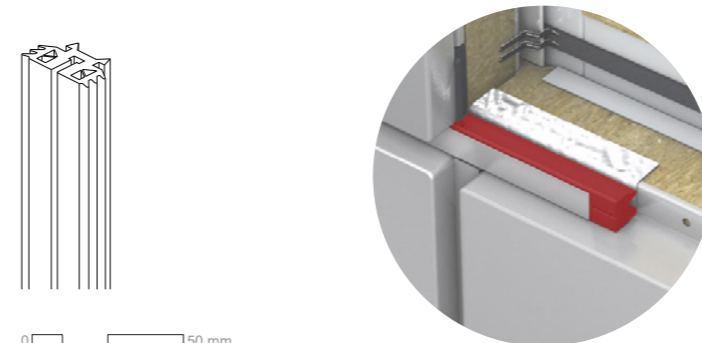


Order quantity: \_\_\_\_\_ m

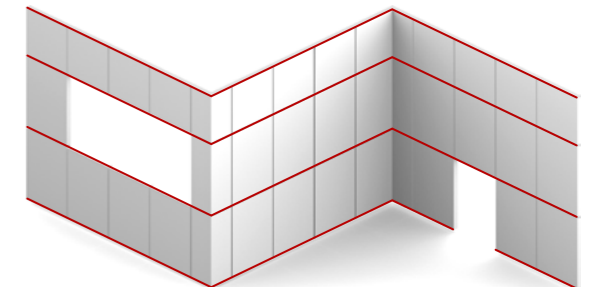


Gasket is installed together with decorative aluminium extrusion and can be prolonged anywhere along the joint with silicone adhesive (e.g. DC 7091, 30007182).

**30014372** | EPDM transversal gasket\*  
Vertical installation



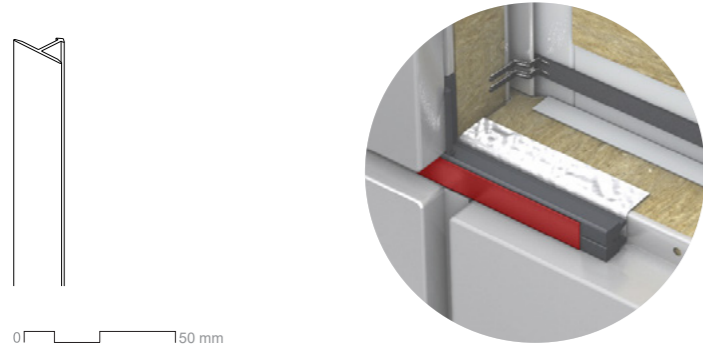
Order quantity: \_\_\_\_\_ m



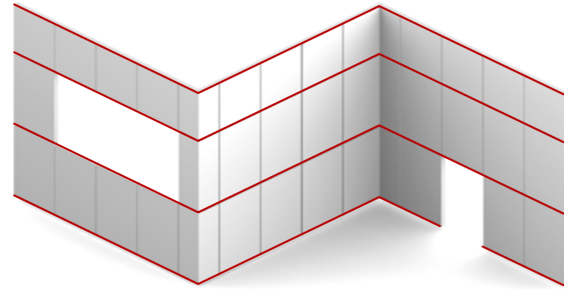
Gasket is installed together with decorative aluminium extrusion and can be prolonged anywhere along the joint with EPDM adhesive (e.g. OT015, 30025812).  
\*upon special request only

CUTTING LIST

**HF 40** | Decorative ALU extrusion  
Vertical installation

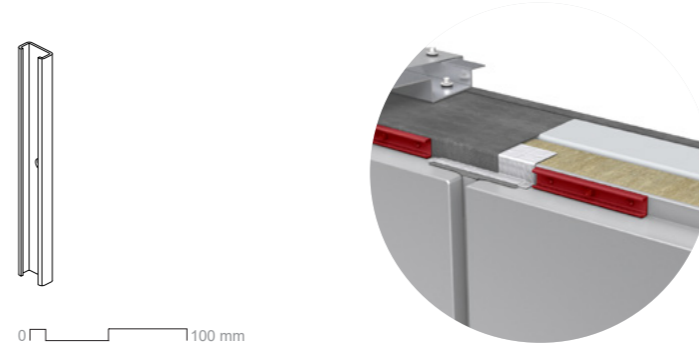


Color: \_\_\_\_\_ Order quantity: \_\_\_\_\_ pcs (L=4,0m)

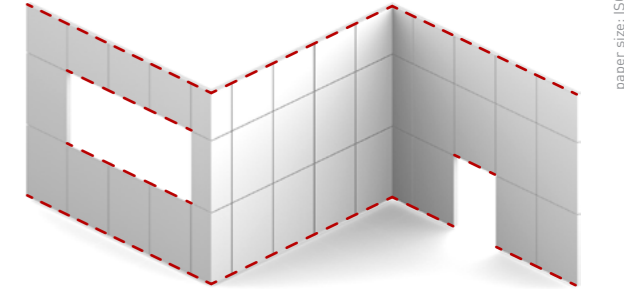


Aluminium extrusion is supplied in 4,0m length and is installed together with transversal gasket. It can be powdercoated to match the colour of façade element, or in any other colour to expose the lines on façade.

**30033030** | Load bearing fixing plate  
Vertical installation



Order quantity: \_\_\_\_\_ pcs

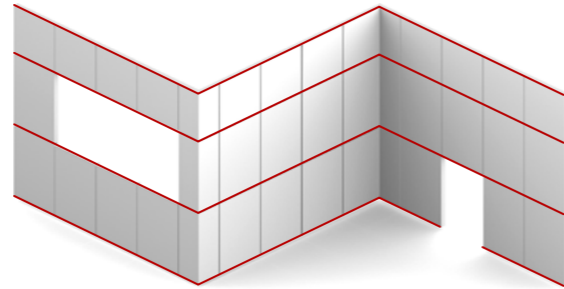


Element is installed during façade installation. The majority of plates are preinstalled on façade elements. Where it is not, needs to be ordered separately. Consumption: check static calculation made for your project (2-6 pcs/panel).

**HF 52** | Decorative ALU extrusion  
Vertical installation

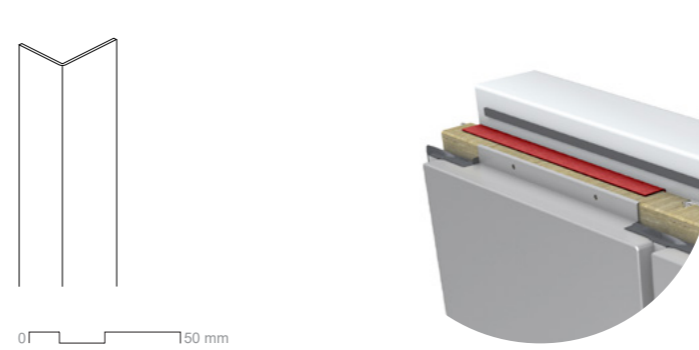


Color: \_\_\_\_\_ Order quantity: \_\_\_\_\_ pcs (L=4,0m)

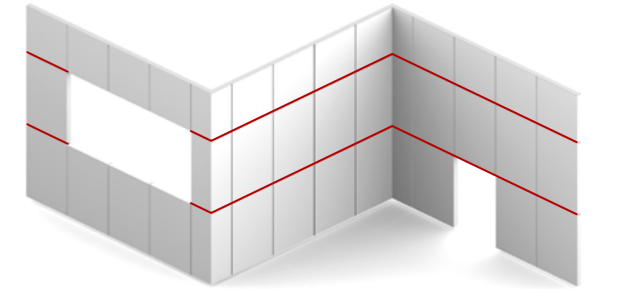


Aluminium extrusion is supplied in 4,0m length and is installed together with transversal gasket. It can be powdercoated to match the colour of façade element, or in any other colour to expose the lines on façade.

**81010514** | Joint profile L (20x25x1)  
Vertical installation



Order quantity: \_\_\_\_\_ pcs ( $L_{max} = M - 5mm$ )

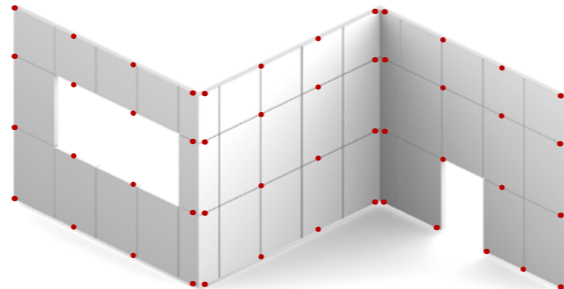


Element is installed during façade installation. Length is adjusted to element module dimension ( $L_{max} = M - 5mm$ ).

**30036952** | Gasket for HF52 alignment  
Vertical installation



Order quantity: \_\_\_\_\_ m

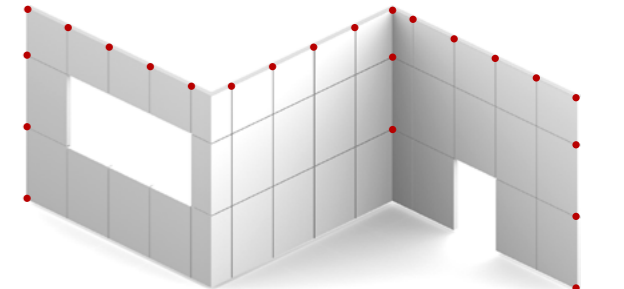


The gasket is applied to the HF52 profile just before installation into the joint to ensure that the profile is held in the center of the joint. The gasket is supplied in a continuous strap and should be cut into 2-3 cm long pieces. These pieces should be applied to both ends of the profile and at intervals of no more than 2 meters. Consumption: approximately 5% of the HF52 length.

**30007025** | EPDM cube gasket (26x26x30)  
Vertical installation



Order quantity: \_\_\_\_\_ pcs



Gasket is installed in hole after façade elements are installed. The cube gasket should be applied to the detail only when the original Qbiss joint is absent (cut elements), ensuring proper water tightness of the joint. Consumption: 1 element per transversal joint or 1 element per longitudinal joint.

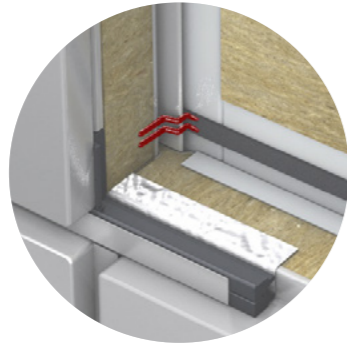
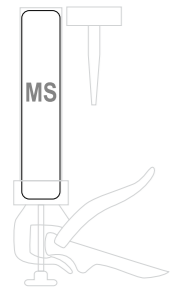
CUTTING LIST

CUTTING LIST



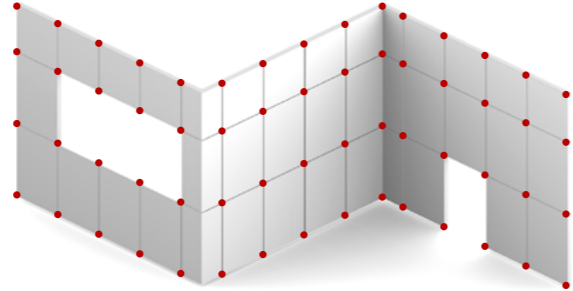
**30025812** | Adhesive 600 ml, EPDM (foil pack)\*

Vertical installation



\*black  
30024863 white / 30025811 grey  
application gun not provided

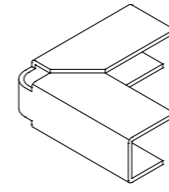
Order quantity: \_\_\_\_\_ pcs



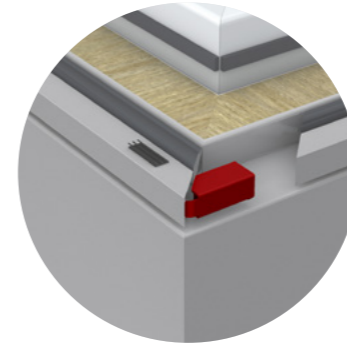
Element is installed during façade installation.  
Consumption:  
approx. 1 pcs/20 m or 1 pcs/100 elements.

**30037045** | Corner insert for HF52

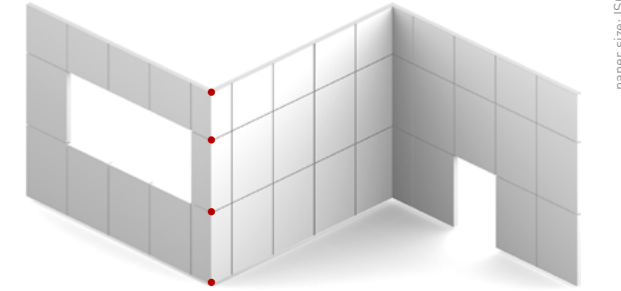
Vertical installation



0 150 mm



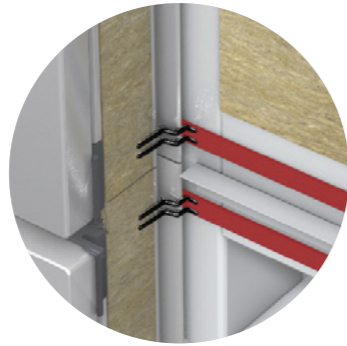
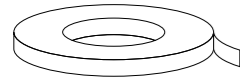
Order quantity: \_\_\_\_\_ pcs



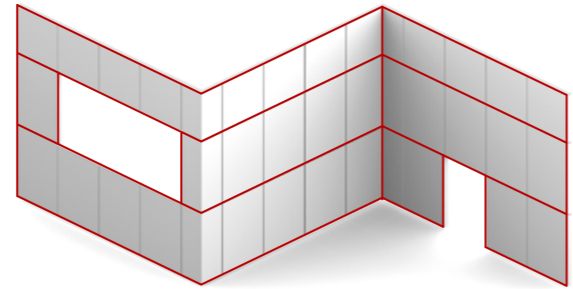
Element is installed together with HF52 aluminium profile.  
Its function is to align both ends of HF52.

**30006985** | Sealing tape (PE 5x10)

Vertical installation



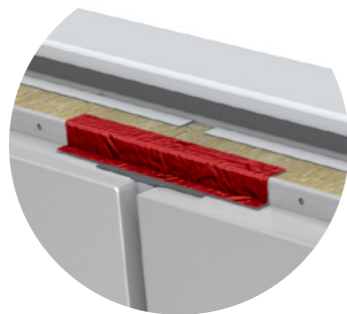
Order quantity: \_\_\_\_\_ m



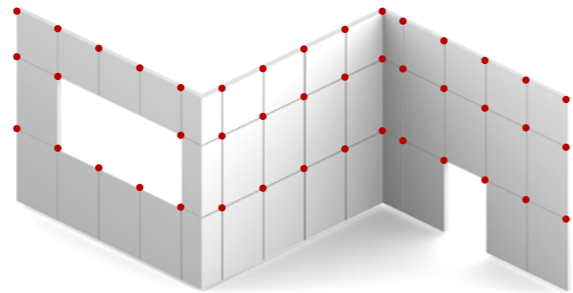
Element is installed before façade installation.  
Its main purpose is to assure air- and vapour-tightness.

**30016941** | Butyl tape + PE (1x50x200)

Vertical installation



Order quantity: \_\_\_\_\_ pcs

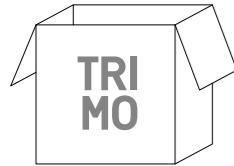


Element is installed during façade installation.

CUTTING LIST

CUTTING LIST

INSTALLATION KITS



**30007109** | Qbiss One Installation kit B

Joint type  B-B  B-BF

**30012195** | Qbiss One Installation kit F

Joint type  F-B  F-BF  BF-B  BF-F

**30018303** | Qbiss One Installation kit Brick

Joint type  Brick

Consumption:  
1 pcs per order and additional 1 pcs for each 500 m2.

Order quantity: \_\_\_\_\_ pcs

1x Qbiss One installation guide  
4x Qbiss One centering cross B-B,  
2x wooden boards with protective felt  
1x syringe with soap water

Order quantity: \_\_\_\_\_ pcs

1x Qbiss One installation guide  
4x Qbiss One centering cross F-B,  
2x wooden boards with protective felt  
1x syringe with soap water

Order quantity: \_\_\_\_\_ pcs

1x Qbiss One installation guide  
4x Qbiss One centering cross Brick  
2x wooden boards with protective felt  
1x syringe with soap water

CUTTING LIST

HK15, KOLN  
GERMANY, 2018

HORIZONTAL QBISS SCREEN MW



©Annika Feuss

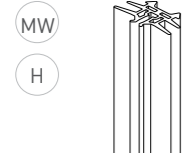
# QBISS SCREEN Accessories

## HORIZONTAL INSTALLATION

For reference on the installation position see chapter QBISS ONE Accessories.

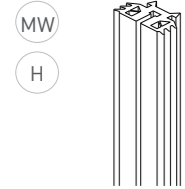
### 30032065 | Silicone transversal gasket

Horizontal installation



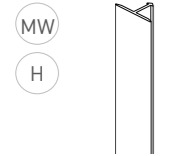
### 30014372 | EPDM transversal gasket\*

Horizontal installation



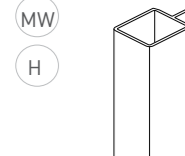
### HF40 | Decorative ALU extrusion

Horizontal installation



### HF52 | Decorative ALU extrusion

Horizontal installation



Order quantity: \_\_\_\_\_ m

Gasket is installed together with decorative aluminium extrusion and can be prolonged anywhere along the joint with silicone adhesive (e.g. DC 7091, 30007182).

Order quantity: \_\_\_\_\_ m

Gasket is installed together with decorative aluminium extrusion and can be prolonged anywhere along the joint with EPDM adhesive (e.g. OT015, 30025812).  
\*upon special request only

Color: \_\_\_\_\_ Order quantity: \_\_\_\_\_ pcs (L=4,0m)

Aluminium extrusion is supplied in 4,0m length and is installed together with transversal gasket. It can be powdercoated to match the colour of façade element, or in any other colour to expose the lines on façade.

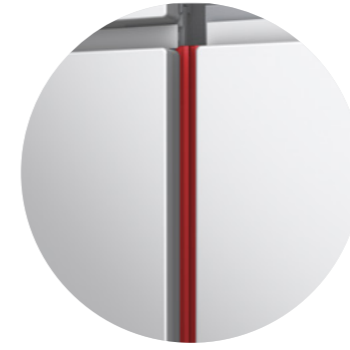
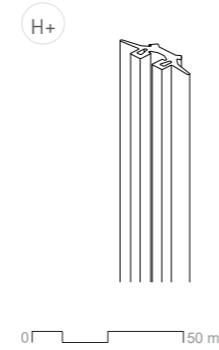
Color: \_\_\_\_\_ Order quantity: \_\_\_\_\_ pcs (L=4,0m)

Aluminium extrusion is supplied in 4,0m length and is installed together with transversal gasket. It can be powdercoated to match the colour of façade element, or in any other colour to expose the lines on façade.

CUTTING LIST

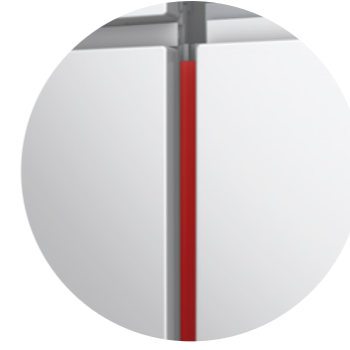
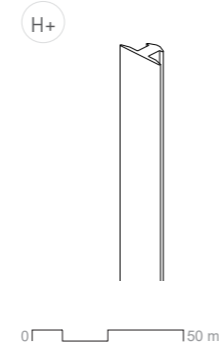
### 30030237 | Silicone transversal gasket H+

Horizontal installation



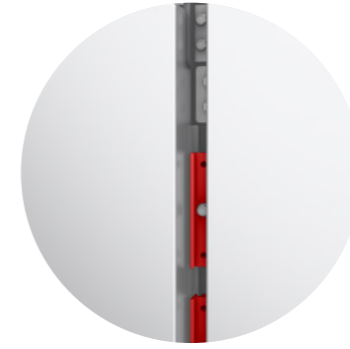
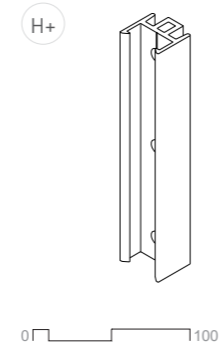
### HF64 | Decorative ALU extrusion

Horizontal installation

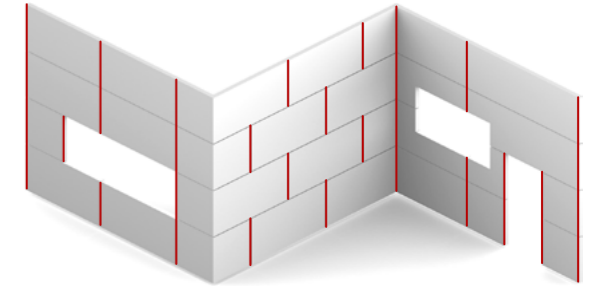


### 81006837 | Fixing profile HF63

Horizontal installation

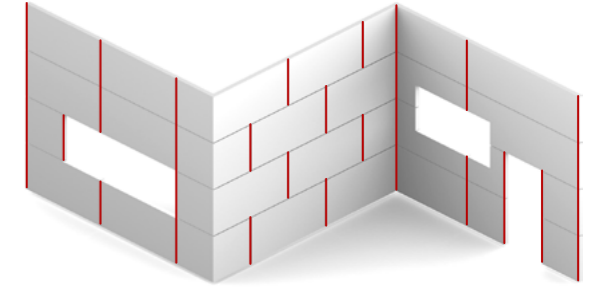


Order quantity: \_\_\_\_\_ m



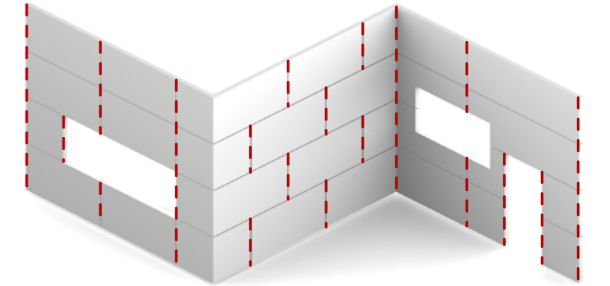
Gasket is installed together with decorative aluminium extrusion and can be prolonged anywhere along the joint. For prolongation use adhesive (e.g. DC 7091 310 ML, 30007182).

Color: \_\_\_\_\_ Order quantity: \_\_\_\_\_ pcs (L=4,0m)



Aluminium extrusion is supplied in 4,0 m length and is installed together with transversal gasket. It can be powdercoated to match the colour of façade element, or in any other colour to expose the lines on façade.

Order quantity: \_\_\_\_\_ pcs

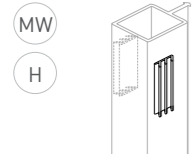


Fixing profile is not preinstalled on facade elements. Elements needs to be ordered separately.

Consumption (M ... Element module):  
M=600-713: 2 pcs/element  
M=714-900: 3 pcs/element  
M=901-1200: 4 pcs/element

CUTTING LIST

**30036952** | Gasket for HF52 alignment  
Horizontal installation



MW  
H

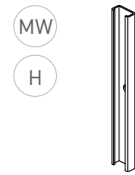
Order quantity: \_\_\_\_\_ m

The gasket is applied to the HF52 profile just before installation into the joint to ensure that the profile is held in the center of the joint. The gasket is supplied in a continuous strap and should be cut into 2-3 cm long pieces. These pieces should be applied to both ends of the profile and at intervals of no more than 2 meters.  
Consumption: approximately 5% of the HF52 length.

Order quantity: \_\_\_\_\_ pcs

Element is installed during façade installation. The majority of plates are preinstalled on façade elements. Where it is not, needs to be ordered separately.  
Consumption: check static calculation made for your project (2-6 pcs/panel).

**30033030** | Load bearing fixing plate  
Horizontal installation

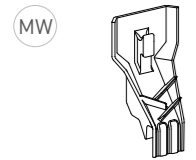


MW  
H

Order quantity: \_\_\_\_\_ pcs

Element is installed during façade installation.

**30006438** | EPDM drip element  
Horizontal installation

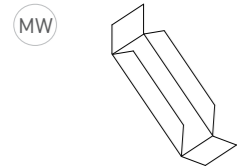


MW

Order quantity: \_\_\_\_\_ pcs

Element is installed after façade installation and should be applied to the detail only when the original Qbiss joint is absent (cut elements), ensuring proper water drainage from the detail joint.  
A mastic seal must be used for sufficient sealing.

**30026912** | Staines drip element  
Horizontal installation

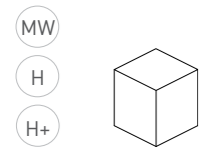


MW

Order quantity: \_\_\_\_\_ pcs

Element is installed after façade installation. The cube gasket should be applied to the detail only when the original Qbiss joint is absent (cut elements), ensuring proper water drainage from the detail joint.  
Consumption: 1 element per longitudinal joint or 2 elements per transversal joint

**30007025** | EPDM cube gasket (26x26x30)  
Horizontal installation

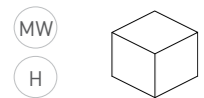


MW  
H  
H+

Order quantity: \_\_\_\_\_ pcs

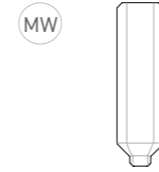
Element is installed on top part of HF52 verticals to prevent water to enter inside.

**30018981** | EPDM cube gasket (20x20x15)  
Horizontal installation



MW  
H

**30006439** | Junction drip element (44x156)  
Horizontal installation

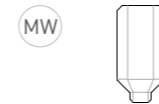


MW

Order quantity: \_\_\_\_\_ pcs

Element is installed during façade installation. Top row elements have to be cut to fit under the tophats before installation.

**30007027** | Junction drip element - Brick (44x92)  
Horizontal installation

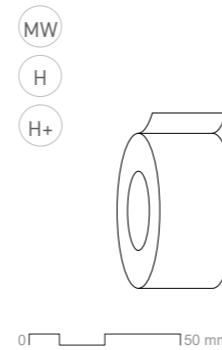


MW

Order quantity: \_\_\_\_\_ pcs

Element is installed during façade installation. Top row elements have to be cut to fit under the tophats before installation.

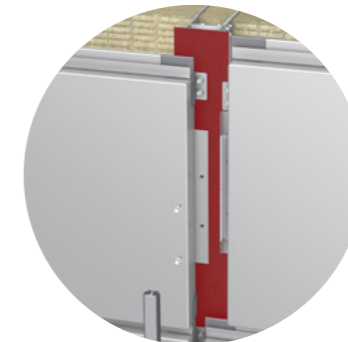
**30035953** | Insulation tape, EPDM (1x100)  
Horizontal installation



MW

H

H+

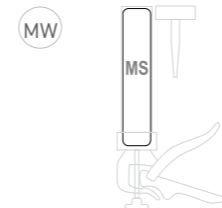


0 150 mm

Order quantity: \_\_\_\_\_ m

To be used in case of aluminium substructure.

**30025812** | Adhesive 600 ml, EPDM (foil pack)\*  
Horizontal installation



MW

Order quantity: \_\_\_\_\_ pcs

Element is installed during façade installation. Consumption: approx. 1 pcs/20 m or 1 pcs/100 elements.

\*black / 30024863 white / 30025811 grey application gun not provided

CUTTING LIST

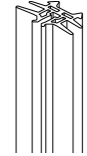
CUTTING LIST

## VERTICAL INSTALLATION

For reference on the installation position see chapter QBISS ONE Accessories.

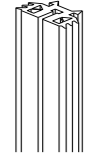
### 30032065 | Silicone transversal gasket

Vertical installation



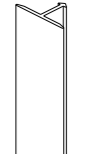
### 30014372 | EPDM transversal gasket\*

Vertical installation



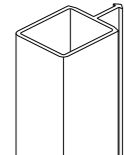
### HF 40 | Decorative ALU extrusion

Vertical installation



### HF 52 | Decorative ALU extrusion

Vertical installation



Order quantity: \_\_\_\_\_ m

Gasket is installed together with decorative aluminium extrusion and can be prolonged anywhere along the joint with silicone adhesive (e.g. DC 7091, 30007182).

Order quantity: \_\_\_\_\_ m

Gasket is installed together with decorative aluminium extrusion and can be prolonged anywhere along the joint with EPDM adhesive (e.g. OT015, 30025812).  
\*upon special request only

Color: \_\_\_\_\_ Order quantity: \_\_\_\_\_ pcs (L=4,0m)

Aluminium extrusion is supplied in 4,0 m length and is installed together with transversal gasket. It can be powdercoated to match the colour of façade element, or in any other colour to expose the lines on façade.

Color: \_\_\_\_\_ Order quantity: \_\_\_\_\_ pcs (L=4,0m)

Aluminium extrusion is supplied in 4,0 m length and is installed together with transversal gasket. It can be powdercoated to match the colour of façade element, or in any other colour to expose the lines on façade.

CUTTING LIST

### 30030237 | Silicone transversal gasket H+

Vertical installation

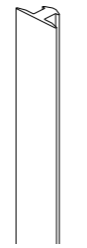


0 \_\_\_\_\_ 150 mm



### HF64 | Decorative ALU extrusion

Vertical installation

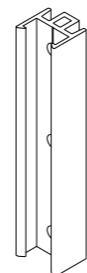


0 \_\_\_\_\_ 150 mm



### 81006837 | Fixing profile HF63

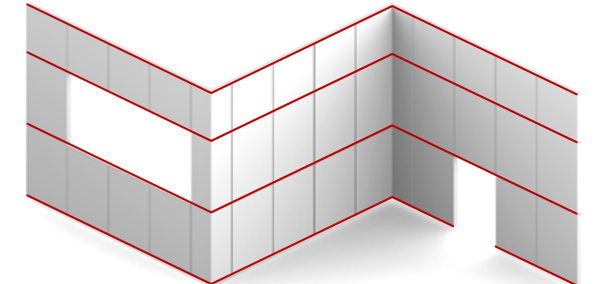
Vertical installation



0 \_\_\_\_\_ 100 mm

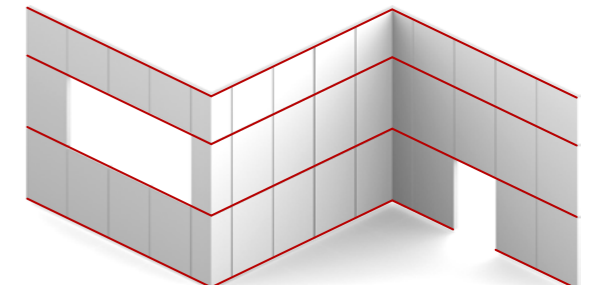


Order quantity: \_\_\_\_\_ m



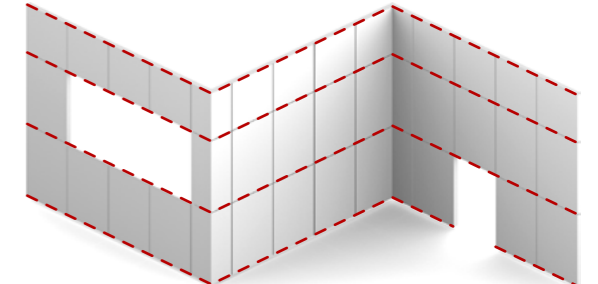
Gasket is installed together with decorative aluminium extrusion and can be prolonged anywhere along the joint. For prolongation use adhesive (e.g. DC 7091 310 ML, 30007182).

Color: \_\_\_\_\_ Order quantity: \_\_\_\_\_ pcs (L=4,0m)



Aluminium extrusion is supplied in 4,0 m length and is installed together with transversal gasket. It can be powdercoated to match the colour of façade element, or in any other colour to expose the lines on façade.

Order quantity: \_\_\_\_\_ pcs



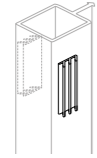
Fixing profile is not preinstalled on facade elements. Elements needs to be ordered separately.

Consumption (M ... Element module):  
M=600-713: 2 pcs/element  
M=714-900: 3 pcs/element  
M=901-1200: 4 pcs/element

CUTTING LIST

**30036952** | Stabilisation for HF52

Vertical installation



Order quantity: \_\_\_\_\_ m

The gasket is applied to the HF52 profile just before installation into the joint to ensure that the profile is held in the center of the joint. The gasket is supplied in a continuous strap and should be cut into 2-3 cm long pieces. These pieces should be applied to both ends of the profile and at intervals of no more than 2 meters.  
Consumption: approximately 5% of the HF52 length.

**30033030** | Load bearing fixing plate

Vertical installation

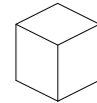


Order quantity: \_\_\_\_\_ pcs

Element is installed during façade installation. The majority of plates are preinstalled on façade elements. Where it is not, needs to be ordered separately.  
Consumption: check static calculation made for your project (2-6 pcs/panel).

**30007025** | EPDM cube gasket (26x26x30)

Vertical installation

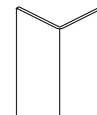


Order quantity: \_\_\_\_\_ pcs

Element is installed after façade installation. The cube gasket should be applied to the detail only when the original Qbiss joint is absent (cut elements), ensuring proper water drainage from the detail joint.  
Consumption: 1 element per longitudinal joint or 2 elements per transversal joint

**81010514** | Joint profile L (20x25x1)

Vertical installation



Order quantity: \_\_\_\_\_ pcs (L = M - 5mm)

Element is installed during façade installation. Length is adjusted to element module dimension ( $L_{max} = M - 5mm$ ).

**30016941** | Butyl tape + PE (1x50x200)

Vertical installation

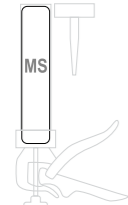


Order quantity: \_\_\_\_\_ pcs

Element is installed during façade installation.

**30025812** | Adhesive 600 ml, EPDM (foil pack)\*

Vertical installation



Order quantity: \_\_\_\_\_ pcs

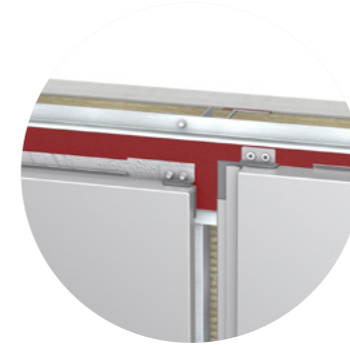
Element is installed during façade installation.  
Consumption: approx. 1 pcs/20 m or 1 pcs/100 elements.

\*black / 30024863 white / 30025811 grey  
application gun not provided

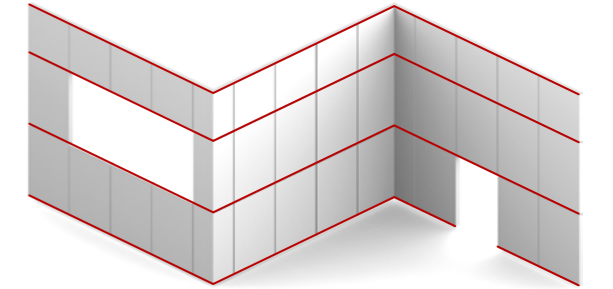
[CUTTING LIST](#)

**30035953** | Insulation tape, EPDM (1x100)

Vertical installation



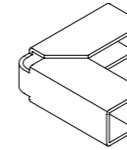
Order quantity: \_\_\_\_\_ m



To be used in case of aluminium substructure.

**30037045** | Corner insert for HF52

Vertical installation

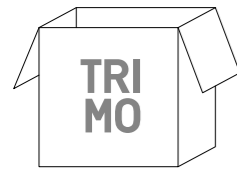


Order quantity: \_\_\_\_\_ pcs

Element is installed together with HF52 aluminium profile. Its function is to align both ends of HF52.

[CUTTING LIST](#)

## INSTALLATION KITS



### 30029187 | Qbiss Screen H Installation kit B

MW    Joint type  B-B  B-BF  
 H

Consumption:  
1 pcs per order and additional 1 pcs for each 500 m2.

Order quantity: \_\_\_\_\_ pcs

1x Qbiss Screen installation guide  
4x Qbiss One centering cross B-B  
1x syringe with soap water  
2x wooden boards with protective felt

### 30029188 | Qbiss Screen H Installation kit F

MW    Joint type  F-B  F-BF  BF-B  BF-F  
 H

Order quantity: \_\_\_\_\_ pcs

1x Qbiss Screen installation guide  
4x Qbiss One centering cross F-B  
1x syringe with soap water  
2x wooden boards with protective felt

### 30030778 | Qbiss Screen H+ Installation kit B

H+    Joint type  B-B  B-BF

Order quantity: \_\_\_\_\_ pcs

1x Qbiss Screen installation guide  
4x Qbiss Screen centering cross B-B  
4x Qbiss Screen cross spacer  
2x wooden boards with protective felt  
2x nut driver bit

### 30030779 | Qbiss Screen H+ Installation kit F

H+    Joint type  F-B  F-BF  BF-B  BF-F

Order quantity: \_\_\_\_\_ pcs

1x Qbiss Screen installation guide  
4x Qbiss Screen centering cross F-B  
4x Qbiss Screen cross spacer  
2x wooden boards with protective felt  
2x nut driver bit

[CUTTING LIST](#)

CSIK FERENC COMPETITION POOL, SOPRON,  
HUNGARY, 2023

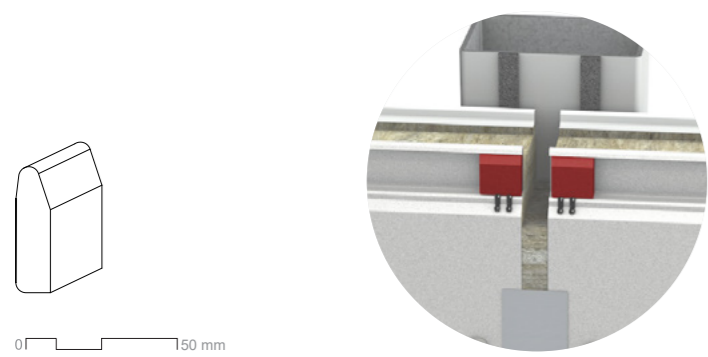
HORIZONTAL QBISS SCREEN MW  
VERTICAL TRIMOTERM FTV



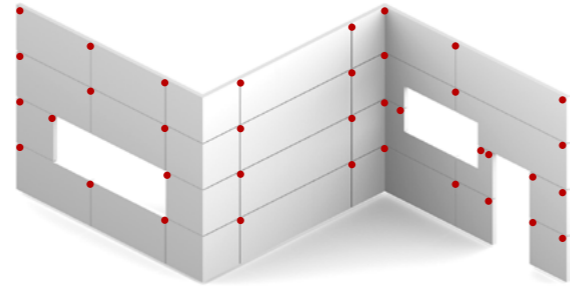
©Mudri Laszlo

## TRIMOTERM FTV HL Accessories

**5010094** | FTV HL Gasket PE (38,5 x 11,8 x 30)  
Horizontal installation

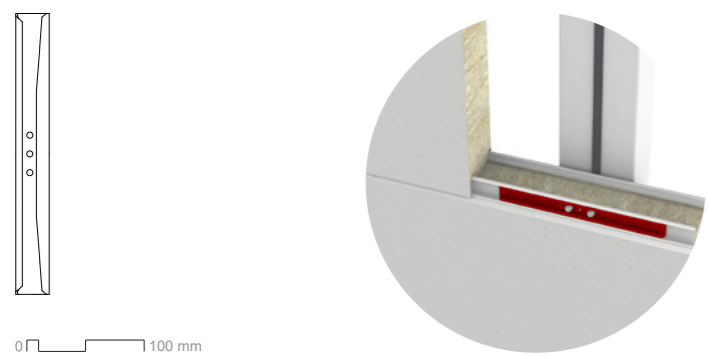


Order quantity: \_\_\_\_\_ pcs

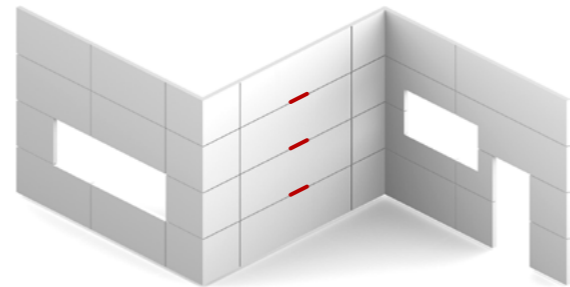


A gasket is installed at the end of each panel to prevent water leakage inside the detail. Gaskets are only used in horizontal systems.

**30009193** | FTV HL Washer L=300 mm  
Horizontal installation

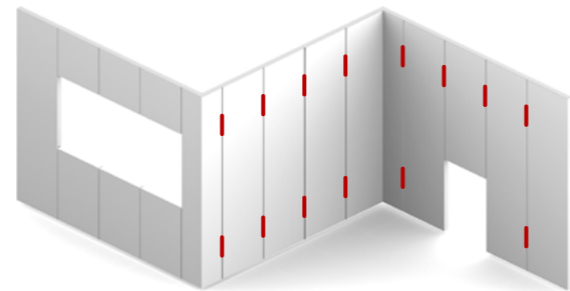


Order quantity: \_\_\_\_\_ pcs



Washer must be used for invisible fixing at middle supports. For each washer, 2 or 3 screws are required, depending on the static calculation.

Vertical installation

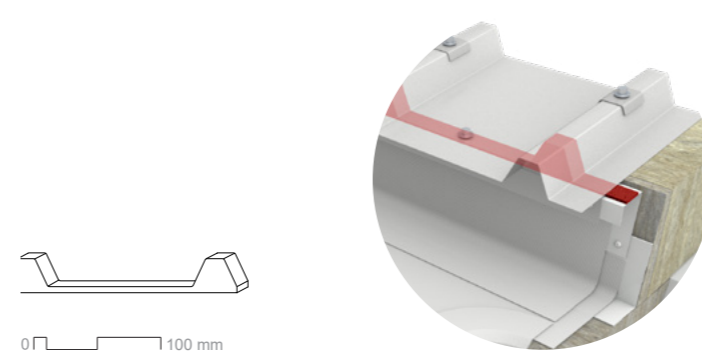


Washer must be used for invisible fixing at middle supports. For each washer, 2 or 3 screws are required, depending on the static calculation.

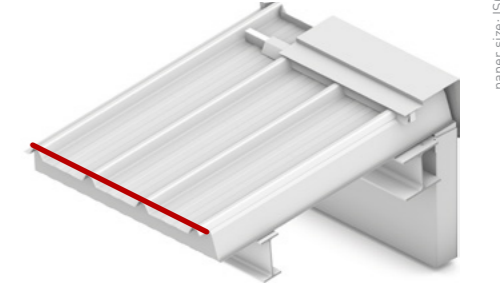
[CUTTING LIST](#)

## TRIMOTERM SNV Accessories

**30007657** | Profile filler SNV 1000 PE - positive

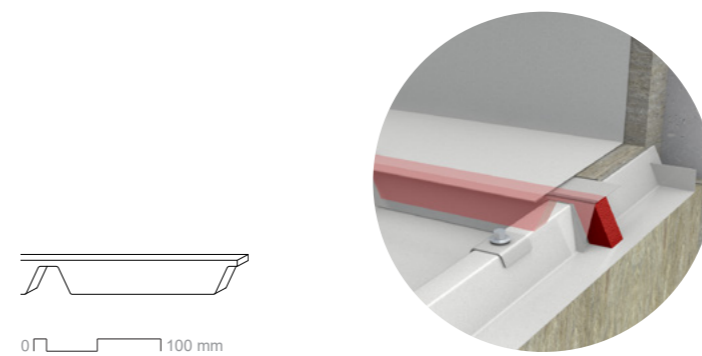


Order quantity: \_\_\_\_\_ pcs (L=1,0m)

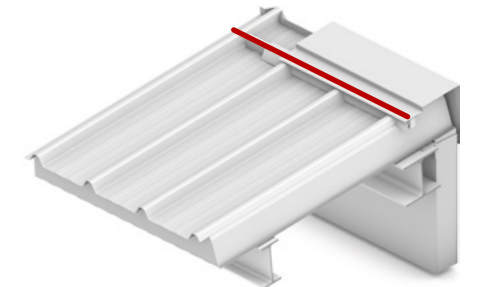


Filler is shaped to fit the Trimoterm SNV profile. The length of the filler is standard at 1,0 m.

**30007654** | Profile filler SNV 1000 PE - negative

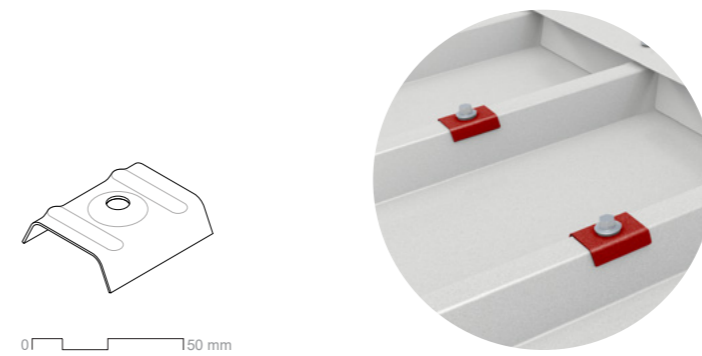


Order quantity: \_\_\_\_\_ pcs (L=1,0m)

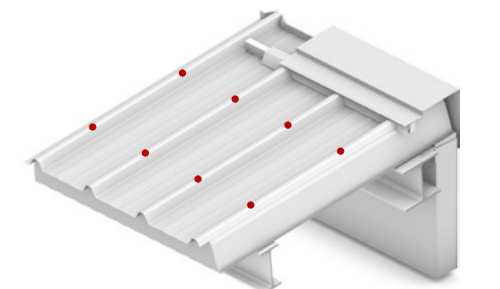


Filler is shaped to fit the Trimoterm SNV profile. The length of the filler is standard at 1,0 m.

SNV Saddle washers



Color: \_\_\_\_\_ Order quantity: \_\_\_\_\_ pcs (L=4,0m)



Saddle washer is shaped to fit the Trimoterm SNV profile.

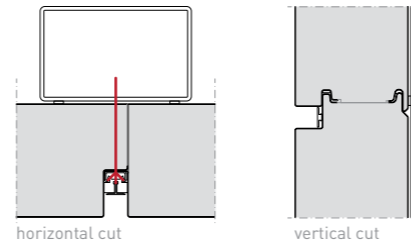
[CUTTING LIST](#)



# QBISS ONE Screws

## FIXING THROUGH JOINT

Df = T - 45 mm  
 Df ... Element thickness where screw is installed  
 T ... Element thickness



### SELF DRILLING SCREWS

Substructure thickness	2 mm < t < 5mm		4 mm < t < 12 mm	
Panel thickness [T]	ID	name	ID	name
<b>Qbiss One 80</b>	30023341	EJOT JT3-6-5,5x 70	30023751	EJOT JT3-12-5,5x 78
	N/D	SFS SX5-5,5x78 [A2]	N/D	SFS SX16-5,8x90 [A4]
<b>Qbiss One 100</b>	30023413	EJOT JT3-6-5,5x 90	30023757	EJOT JT3-12-5,5x 98
	N/D	SFS SX5-6,3x100 [A4]	N/D	SFS SX16-5,8x110 [A4]
<b>Qbiss One 120</b>	30023414	EJOT JT3-6-5,5x110	30023591	EJOT JT3-12-5,5x118
	N/D	SFS SX5-6,3x120 [A4]	N/D	SFS SX16-5,8x130 [A4]
<b>Qbiss One 133</b>	30023416	EJOT JT3-6-5,5x130	30023592	EJOT JT3-12-5,5x138
	N/D	SFS SX5-6,3x120 [A4]	N/D	SFS SX16-5,8x150 [A4]
<b>Qbiss One 150</b>	30023416	EJOT JT3-6-5,5x130	30023592	EJOT JT3-12-5,5x138
	N/D	SFS SX5-6,3x160 [A4]	N/D	SFS SX16-5,8x170 [A4]
<b>Qbiss One 172</b>	30023468	EJOT JT3-6-5,5x150	30023410	EJOT JT3-12-5,5x158
	N/D	SFS SX5-6,3x160 [A4]	N/D	SFS SX16-5,8x200 [A4]
<b>Qbiss One 200</b>	30023607	EJOT JT3-6-5,5x190	30023758	EJOT JT3-12-5,5x198
	N/D	SFS SX5-6,3x190 [A4]	N/D	SFS SX16-5,8x230 [A4]
<b>Qbiss One 220</b>	30023820	EJOT JT3-D-6H-5,5/6,3 x 237	30024059	EJOT JT3-D-12H-5,5/6,6x245
	N/D	SFS SX5-6,3x220 [A4]	N/D	SFS SX16-5,8x230 [A4]
<b>Qbiss One 240</b>	30023820	EJOT JT3-D-6H-5,5/6,3 x 237	30024059	EJOT JT3-D-12H-5,5/6,6x245
	N/D	SFS SX5-6,3x250 [A4]	N/D	SFS SX16-5,8x260 [A4]
<b>Qbiss One 250</b>	30023820	EJOT JT3-D-6H-5,5/6,3 x 237	30024059	EJOT JT3-D-12H-5,5/6,6x245
	N/D	SFS SX5-6,3x250 [A4]	N/D	SFS SX16-5,8x260 [A4]

### SELF TAPING SCREWS

Substructure thickness	2 mm < t			
Panel thickness [T]	ID	name	ID	name
<b>Qbiss One 80</b>	30035921	EJOT JZ5 6,3x63	N/D	SFS TDB-S-6,3x60
<b>Qbiss One 100</b>	30035922	EJOT JZ5 6,3x83	N/D	SFS TDB-S-6,3x80
<b>Qbiss One 120</b>	30035924	EJOT JZ5 6,3x103	N/D	SFS TDB-S-6,3x100
<b>Qbiss One 133</b>	30035926	EJOT JZ5 6,3x123	N/D	SFS TDB-S-6,3x100
<b>Qbiss One 150</b>	30035926	EJOT JZ5 6,3x123	N/D	SFS TDB-S-6,3x120
<b>Qbiss One 172</b>	30035929	EJOT JZ5 6,3x153	N/D	SFS TDB-S-6,3x140
<b>Qbiss One 200</b>	30035931	EJOT JZ5 6,3x183	N/D	SFS TDB-S-6,3x180
<b>Qbiss One 220</b>	30035932	EJOT JZ5 6,3x203	N/D	SFS TDB-S-6,3x200
<b>Qbiss One 240</b>	30035933	EJOT JZ5 6,3x223	N/D	SFS TDB-S-6,3x220
<b>Qbiss One 250</b>	30035933	EJOT JZ5 6,3x223	N/D	SFS TDB-S-6,3x220

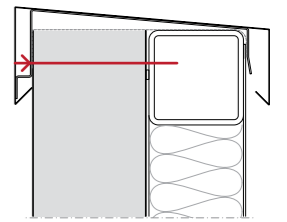
[CUTTING LIST](#)

We provide general information on screws but do not advise any specific type, since the decision on the right screws is solely responsibility of buyer. The information provided in this table is intended to serve as a helpful guide for selecting screws for specific sandwich panels. However, the final selection of the appropriate screws should be made by a qualified project designer. Trimo, including its subsidiaries, does not accept any responsibility or liability for damages, errors or inaccuracies in the information provided in this table.

\*The structural thickness ranges provided in this table are simplified and represent a general overlap between different screws. These ranges should not be used as definitive characteristics for any specific screw. For accurate and detailed specifications, please refer to the individual data sheets for each screw type.

## FIXING THROUGH ELEMENT

Df = T  
 Df ... Element thickness where screw is installed  
 T ... Element thickness



### SELF DRILLING SCREWS

Substructure thickness	2 mm < t < 5mm		4 mm < t < 12 mm	
Panel thickness [T]	ID	name	ID	name
<b>Qbiss One 80</b>	30024462	EJOT JT3-D-6H-5,5/6,3x127 E19	30024463	EJOT JT3-D-12H-5,5/6,3x135 E19
	30032052	SFS SXC5-S19 6.3x120 [A2]	30033265	SFS SXC16-S19 5.8x130 [A2]
<b>Qbiss One 100</b>	30024462	EJOT JT3-D-6H-5,5/6,3x127 E19	30027301	EJOT JT3-D-12H-5,5/6,3x155 E19
	30032810	SFS SXC5-S19 6.3x140 [A2]	30036596	SFS SXC16-S19 5.8x150 [A2]
<b>Qbiss One 120</b>	30024990	EJOT JT3-D-6H-5,5/6,3x167 E19	30027306	EJOT JT3-D-12H-5,5/6,3x175 E19
	30032051	SFS SXC5-S19 6.3x160 [A2]	N/D	SFS SXC16-S19 5.8x170 [A2]
<b>Qbiss One 133</b>	30024990	EJOT JT3-D-6H-5,5/6,3x167 E19	30027306	EJOT JT3-D-12H-5,5/6,3x175 E19
	30032383	SFS SXC5-S19 6.3x190 [A2]	30036269	SFS SXC16-S19 5.8x200 [A2]
<b>Qbiss One 150</b>	30011562	EJOT JT3-D-6H-5,5/6,3x197 E19	30027305	EJOT JT3-D-12H-5,5/6,3x195 E19
	30032383	SFS SXC5-S19 6.3x190 [A2]	30036269	SFS SXC16-S19 5.8x200 [A2]
<b>Qbiss One 172</b>	30023821	EJOT JT3-D-6H-5,5/6,3x237 E19	30024060	EJOT JT3-D-12H-5,5/6,3x245 E19
	30031695	SFS SXC5-S19 6.3x220 [A2]	30032843	SFS SXC16-S19 5.8x230 [A2]
<b>Qbiss One 200</b>	30023821	EJOT JT3-D-6H-5,5/6,3x237 E19	30024060	EJOT JT3-D-12H-5,5/6,3x245 E19
	30032841	SFS SXC5-S19 6.3x250 [A2]	30032844	SFS SXC16-S19 5.8x260 [A2]
<b>Qbiss One 220</b>	30027310	EJOT JT3-D-6H-5,5/6,3x267 E19	30027304	EJOT JT3-D-12H-5,5/6,3x275 E19
	30032842	SFS SXC5-S19 6.3x290 [A2]	N/D	SFS SXC16-S19 5.8x300 [A2]
<b>Qbiss One 240</b>	30027310	EJOT JT3-D-6H-5,5/6,3x267 E19	30027304	EJOT JT3-D-12H-5,5/6,3x275 E19
	30032842	SFS SXC5-S19 6.3x290 [A2]	N/D	SFS SXC16-S19 5.8x300 [A2]
<b>Qbiss One 250</b>	/	/	30024102	EJOT JT3-D-12H-5,5/6,3x300 E19
	30032842	SFS SXC5-S19 6.3x290 [A2]	N/D	SFS SXC16-S19 5.8x300 [A2]

### SELF TAPING SCREWS

Substructure thickness	2 mm < t			
Panel thickness [T]	ID	name	ID	name
<b>Qbiss One 80</b>	30035886	SCREW JZ5 6,3x103 E19	N/D	SFS TDB-S-S19-6,3x100
<b>Qbiss One 100</b>	30035906	SCREW JZ5 6,3x123 E19	N/D	SFS TDB-S-S19-6,3x120
<b>Qbiss One 120</b>	30035909	SCREW JZ5 6,3x153 E19	N/D	SFS TDB-S-S19-6,3x140
<b>Qbiss One 133</b>	30035911	SCREW JZ5 6,3x183 E19	N/D	SFS TDB-S-S19-6,3x160
<b>Qbiss One 150</b>	30035911	SCREW JZ5 6,3x183 E19	N/D	SFS TDB-S-S19-6,3x180
<b>Qbiss One 172</b>	30035912	SCREW JZ5 6,3x203 E19	N/D	SFS TDB-S-S19-6,3x200
<b>Qbiss One 200</b>	30035914	SCREW JZ5 6,3x223 E19	N/D	SFS TDB-S-S19-6,3x220
<b>Qbiss One 220</b>	30035916	SCREW JZ5 6,3x263 E19	N/D	SFS TDB-S-S19-6,3x260
<b>Qbiss One 240</b>	30035916	SCREW JZ5 6,3x263 E19	N/D	SFS TDB-S-S19-6,3x260
<b>Qbiss One 250</b>	30035916	SCREW JZ5 6,3x263 E19	N/D	SFS TDB-S-S19-6,3x260

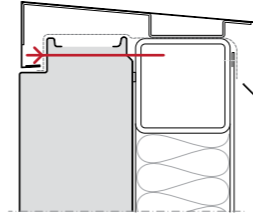
[CUTTING LIST](#)

We provide general information on screws but do not advise any specific type, since the decision on the right screws is solely responsibility of buyer. The information provided in this table is intended to serve as a helpful guide for selecting screws for specific sandwich panels. However, the final selection of the appropriate screws should be made by a qualified project designer. Trimo, including its subsidiaries, does not accept any responsibility or liability for damages, errors or inaccuracies in the information provided in this table.

\*The structural thickness ranges provided in this table are simplified and represent a general overlap between different screws. These ranges should not be used as definitive characteristics for any specific screw. For accurate and detailed specifications, please refer to the individual data sheets for each screw type.

## Fixing through longitudinal joint

Df = T - 29 mm  
Df ... Element thickness where screw is installed  
T ... Element thickness



### SELF DRILLING SCREWS

Substructure thickness	2 mm < t < 5mm		4 mm < t < 12 mm	
Panel thickness [T]	ID	name	ID	name
<b>Qbiss One 80</b>	30027331	SCREW JT3-D-6H-5,5/6,3x 87 E19	30027308	EJOT JT3-D-12H-5,5/6,3x 95 E19
	30032715	SFS SXC5-S19 6.3x100 [A2]	N/D	SFS SXC16-S19 5.8x110 [A2]
<b>Qbiss One 100</b>	30026964	EJOT JT3-D-6H-5,5/6,3x107 E19	30027307	EJOT JT3-D-12H-5,5/6,3x115 E19
	30032052	SFS SXC5-S19 6.3x120 [A2]	30033265	SFS SXC16-S19 5.8x130 [A2]
<b>Qbiss One 120</b>	30024462	EJOT JT3-D-6H-5,5/6,3x127 E19	30024463	EJOT JT3-D-12H-5,5/6,3x135 E19
	30032810	SFS SXC5-S19 6.3x140 [A2]	30036596	SFS SXC16-S19 5.8x150 [A2]
<b>Qbiss One 133</b>	30027300	EJOT JT3-D-6H-5,5/6,3x147 E19	30027301	EJOT JT3-D-12H-5,5/6,3x155 E19
	30032051	SFS SXC5-S19 6.3x160 [A2]	N/D	SFS SXC16-S19 5.8x170 [A2]
<b>Qbiss One 150</b>	30024990	EJOT JT3-D-6H-5,5/6,3x167 E19	30027306	EJOT JT3-D-12H-5,5/6,3x175 E19
	30032383	SFS SXC5-S19 6.3x190 [A2]	30036269	SFS SXC16-S19 5.8x200 [A2]
<b>Qbiss One 172</b>	30011562	EJOT JT3-D-6H-5,5/6,3x197 E19	30027305	EJOT JT3-D-12H-5,5/6,3x195 E19
	30032383	SFS SXC5-S19 6.3x190 [A2]	30036269	SFS SXC16-S19 5.8x200 [A2]
<b>Qbiss One 200</b>	30023821	EJOT JT3-D-6H-5,5/6,3x237 E19	30024060	EJOT JT3-D-12H-5,5/6,3x245 E19
	30031695	SFS SXC5-S19 6.3x220 [A2]	30032843	SFS SXC16-S19 5.8x230 [A2]
<b>Qbiss One 220</b>	30023821	EJOT JT3-D-6H-5,5/6,3x237 E19	30024060	EJOT JT3-D-12H-5,5/6,3x245 E19
	30032841	SFS SXC5-S19 6.3x250 [A2]	30032844	SFS SXC16-S19 5.8x260 [A2]
<b>Qbiss One 240</b>	30027310	EJOT JT3-D-6H-5,5/6,3x267 E19	30027304	EJOT JT3-D-12H-5,5/6,3x275 E19
	30032841	SFS SXC5-S19 6.3x250 [A2]	30032844	SFS SXC16-S19 5.8x260 [A2]
<b>Qbiss One 250</b>	30027310	EJOT JT3-D-6H-5,5/6,3x267 E19	30027304	EJOT JT3-D-12H-5,5/6,3x275 E19
	30032842	SFS SXC5-S19 6.3x290 [A2]	N/D	SFS SXC16-S19 5.8x300 [A2]

### SELF TAPING SCREWS

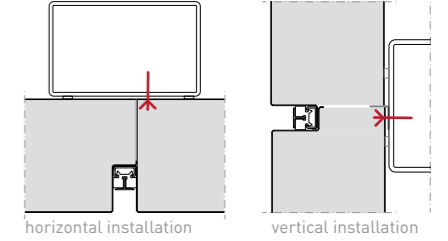
Substructure thickness	2 mm < t			
Panel thickness [T]	ID	name	ID	name
<b>Qbiss One 80</b>	30035902	SCREW JZ5 6,3x 83 E19	N/D	SFS TDB-S-S19-6,3x80
<b>Qbiss One 100</b>	30035903	SCREW JZ5 6,3x 93 E19	N/D	SFS TDB-S-S19-6,3x100
<b>Qbiss One 120</b>	30035905	SCREW JZ5 6,3x113 E19	N/D	SFS TDB-S-S19-6,3x120
<b>Qbiss One 133</b>	30035906	SCREW JZ5 6,3x123 E19	N/D	SFS TDB-S-S19-6,3x140
<b>Qbiss One 150</b>	30035909	SCREW JZ5 6,3x153 E19	N/D	SFS TDB-S-S19-6,3x160
<b>Qbiss One 172</b>	30035911	SCREW JZ5 6,3x183 E19	N/D	SFS TDB-S-S19-6,3x180
<b>Qbiss One 200</b>	30035912	SCREW JZ5 6,3x203 E19	N/D	SFS TDB-S-S19-6,3x200
<b>Qbiss One 220</b>	30035914	SCREW JZ5 6,3x223 E19	N/D	SFS TDB-S-S19-6,3x220
<b>Qbiss One 240</b>	30035916	SCREW JZ5 6,3x263 E19	N/D	SFS TDB-S-S19-6,3x260
<b>Qbiss One 250</b>	30035916	SCREW JZ5 6,3x263 E19	N/D	SFS TDB-S-S19-6,3x260

CUTTING LIST

We provide general information on screws but do not advise any specific type, since the decision on the right screws is solely responsibility of buyer. The information provided in this table is intended to serve as a helpful guide for selecting screws for specific sandwich panels. However, the final selection of the appropriate screws should be made by a qualified project designer. Trimo, including its subsidiaries, does not accept any responsibility or liability for damages, errors or inaccuracies in the information provided in this table.

\*The structural thickness ranges provided in this table are simplified and represent a general overlap between different screws. These ranges should not be used as definitive characteristics for any specific screw. For accurate and detailed specifications, please refer to the individual data sheets for each screw type.

## Fixing through internal steel sheet



	ID	name	Drill capacity [mm]
<b>QBISS ONE internal steel sheet</b>	30036761	SCREW SFS-SX5/8-5,5x31	1,5 mm - 2 mm
	30024305	SCREW EJOT JT3-6-6,3x25	2 mm - 5 mm
	30036018	SCREW EJOT JT2-18-5,5-40	4 mm - 16 mm



Number of screws ( $n_{ks}$ ) is calculated individually for each project. Contact Trimo technical support for calculations.

- horizontal installation
- vertical installation

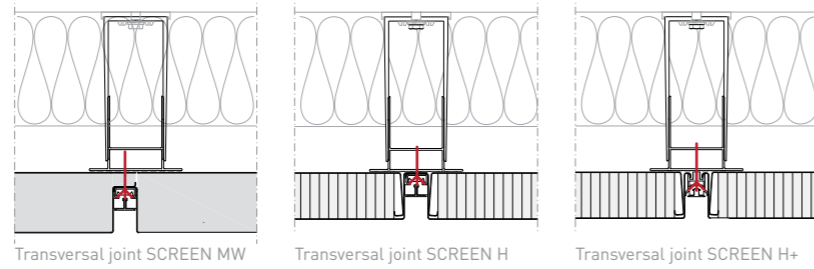
CUTTING LIST

We provide general information on screws but do not advise any specific type, since the decision on the right screws is solely responsibility of buyer. The information provided in this table is intended to serve as a helpful guide for selecting screws for specific sandwich panels. However, the final selection of the appropriate screws should be made by a qualified project designer. Trimo, including its subsidiaries, does not accept any responsibility or liability for damages, errors or inaccuracies in the information provided in this table.

\*The structural thickness ranges provided in this table are simplified and represent a general overlap between different screws. These ranges should not be used as definitive characteristics for any specific screw. For accurate and detailed specifications, please refer to the individual data sheets for each screw type.

# QBISS SCREEN Screws

## Fixing through joint



### SELF DRILLING SCREWS

Substructure thickness	Aluminium substructure, tmax=4mm		Steel substructure, tmax=4 mm	
Panel type	ID	name	ID	name
SCREEN MW (65mm)	30018005	SCREW JT3-6-5,5x 50	30018005	SCREW JT3-6-5,5x 50
	N/D	SX5-5,5x61 [A4]	N/D	SX5-5,5x61 [A2]
SCREEN H (50mm)	30028922	SCREW JT4 6 5,5 x 30	30021786	SCREW JT3 6 5,5 x 30
	30030781	SX5-5,5x35 [A4]	30030780	SX5-5,5x35 [A2]
SCREEN H+ (50mm)	30028922	SCREW JT4 6 5,5 x 30	30021786	SCREW JT3 6 5,5 x 30
	30030781	SX5-5,5x35 [A4]	30030780	SX5-5,5x35 [A2]

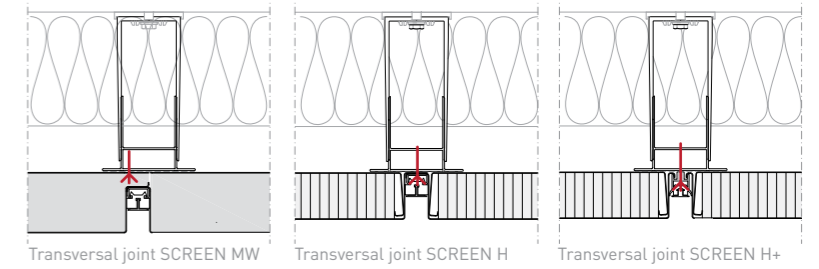


[CUTTING LIST](#)

We provide general information on screws but do not advise any specific type, since the decision on the right screws is solely responsibility of buyer. The information provided in this table is intended to serve as a helpful guide for selecting screws for specific sandwich panels. However, the final selection of the appropriate screws should be made by a qualified project designer. Trimo, including its subsidiaries, does not accept any responsibility or liability for damages, errors or inaccuracies in the information provided in this table.

\*The structural thickness ranges provided in this table are simplified and represent a general overlap between different screws. These ranges should not be used as definitive characteristics for any specific screw. For accurate and detailed specifications, please refer to the individual data sheets for each screw type.

## Fixing through internal steel sheet



	N/D	SFS SX5-6,3x120 [A4]	N/D	SFS SX16-5,8x150 [A4]
Qbiss One 150	30023416	EJOT JT3-6-5,5x130	30023592	EJOT JT3-12-5,5x138
	N/D	SFS SX5-6,3x160 [A4]	N/D	SFS SX16-5,8x170 [A4]
Qbiss One 172	30023468	EJOT JT3-6-5,5x150	30023410	EJOT JT3-12-5,5x158



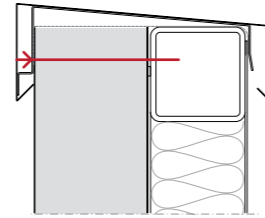
[CUTTING LIST](#)

We provide general information on screws but do not advise any specific type, since the decision on the right screws is solely responsibility of buyer. The information provided in this table is intended to serve as a helpful guide for selecting screws for specific sandwich panels. However, the final selection of the appropriate screws should be made by a qualified project designer. Trimo, including its subsidiaries, does not accept any responsibility or liability for damages, errors or inaccuracies in the information provided in this table.

\*The structural thickness ranges provided in this table are simplified and represent a general overlap between different screws. These ranges should not be used as definitive characteristics for any specific screw. For accurate and detailed specifications, please refer to the individual data sheets for each screw type.

# TRIMOTERM FTV Screws

Df = T - 45mm  
Df ... Element thickness where screw is installed  
T ... Element thickness



## SELF DRILLING SCREWS

Substructure thickness	2 mm < t < 5mm		4 mm < t < 12 mm	
Panel thickness [T]	ID	name	ID	name
<b>FTV 50</b>	30027331	EJOT JT3-D-6H-5,5/6,3x 87 E19	30027308	EJOT JT3-D-12H-5,5/6,3x 95 E19
	30032715	SFS SXC5-S19-6,3x100-A2	N/D	SFS SXC16-S19 5.8x110 [A2]
<b>FTV 60</b>	30026964	EJOT JT3-D-6H-5,5/6,3x107 E19	30027307	EJOT JT3-D-12H-5,5/6,3x115 E19
	30032715	SFS SXC5-S19-6,3x100-A2	N/D	SFS SXC16-S19 5.8x110 [A2]
<b>FTV 80</b>	30024462	EJOT JT3-D-6H-5,5/6,3x127 E19	30024463	EJOT JT3-D-12H-5,5/6,3x135 E19
	30032052	SFS SXC5-S19 6.3x120 [A2]	30033265	SFS SXC16-S19 5.8x130 [A2]
<b>FTV 100</b>	30024462	EJOT JT3-D-6H-5,5/6,3x127 E19	30027301	EJOT JT3-D-12H-5,5/6,3x155 E19
	30032810	SFS SXC5-S19 6.3x140 [A2]	30036596	SFS SXC16-S19 5.8x150 [A2]
<b>FTV 120</b>	30024990	EJOT JT3-D-6H-5,5/6,3x167 E19	30027306	EJOT JT3-D-12H-5,5/6,3x175 E19
	30032051	SFS SXC5-S19 6.3x160 [A2]	N/D	SFS SXC16-S19 5.8x170 [A2]
<b>FTV 133</b>	30024990	EJOT JT3-D-6H-5,5/6,3x167 E19	30027306	EJOT JT3-D-12H-5,5/6,3x175 E19
	30032383	SFS SXC5-S19 6.3x190 [A2]	30036269	SFS SXC16-S19 5.8x200 [A2]
<b>FTV 150</b>	30011562	EJOT JT3-D-6H-5,5/6,3x197 E19	30027305	EJOT JT3-D-12H-5,5/6,3x195 E19
	30032383	SFS SXC5-S19 6.3x190 [A2]	30036269	SFS SXC16-S19 5.8x200 [A2]
<b>FTV 172</b>	30023821	EJOT JT3-D-6H-5,5/6,3x237 E19	30024060	EJOT JT3-D-12H-5,5/6,3x245 E19
	30031695	SFS SXC5-S19 6.3x220 [A2]	30032843	SFS SXC16-S19 5.8x230 [A2]
<b>FTV 200</b>	30023821	EJOT JT3-D-6H-5,5/6,3x237 E19	30024060	EJOT JT3-D-12H-5,5/6,3x245 E19
	30032841	SFS SXC5-S19 6.3x250 [A2]	30032844	SFS SXC16-S19 5.8x260 [A2]
<b>FTV 220</b>	30027310	EJOT JT3-D-6H-5,5/6,3x267 E19	30027304	EJOT JT3-D-12H-5,5/6,3x275 E19
	30032842	SFS SXC5-S19 6.3x290 [A2]	N/D	SFS SXC16-S19 5.8x300 [A2]
<b>FTV 240</b>	30027310	EJOT JT3-D-6H-5,5/6,3x267 E19	30027304	EJOT JT3-D-12H-5,5/6,3x275 E19
	30032842	SFS SXC5-S19 6.3x290 [A2]	N/D	SFS SXC16-S19 5.8x300 [A2]
<b>FTV 250</b>			30024102	EJOT JT3-D-12H-5,5/6,3x300 E19
	30032842	SFS SXC5-S19 6.3x290 [A2]	N/D	SFS SXC16-S19 5.8x300 [A2]

## SELF TAPING SCREWS

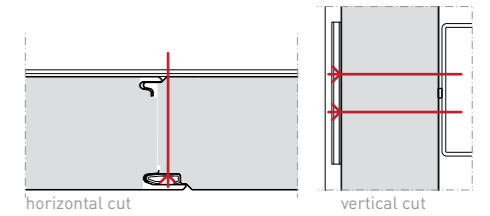
Substructure thickness	2 mm < t			
Panel thickness [T]	ID	name	ID	name
<b>FTV 50</b>	30035902	SCREW JZ5 6,3x 83 E19	N/D	SFS TDB-S-S19-6,3x80
<b>FTV 60</b>	30035902	SCREW JZ5 6,3x 83 E19	N/D	SFS TDB-S-S19-6,3x80
<b>FTV 80</b>	30035886	SCREW JZ5 6,3x103 E19	N/D	SFS TDB-S-S19-6,3x100
<b>FTV 100</b>	30035906	SCREW JZ5 6,3x123 E19	N/D	SFS TDB-S-S19-6,3x120
<b>FTV 120</b>	30035909	SCREW JZ5 6,3x153 E19	N/D	SFS TDB-S-S19-6,3x140
<b>FTV 133</b>	30035911	SCREW JZ5 6,3x183 E19	N/D	SFS TDB-S-S19-6,3x160
<b>FTV 150</b>	30035911	SCREW JZ5 6,3x183 E19	N/D	SFS TDB-S-S19-6,3x180
<b>FTV 172</b>	30035912	SCREW JZ5 6,3x203 E19	N/D	SFS TDB-S-S19-6,3x200
<b>FTV 200</b>	30035914	SCREW JZ5 6,3x223 E19	N/D	SFS TDB-S-S19-6,3x220
<b>FTV 220</b>	30035916	SCREW JZ5 6,3x263 E19	N/D	SFS TDB-S-S19-6,3x260
<b>FTV 240</b>	30035916	SCREW JZ5 6,3x263 E19	N/D	SFS TDB-S-S19-6,3x260
<b>FTV 250</b>	30035916	SCREW JZ5 6,3x263 E19	N/D	SFS TDB-S-S19-6,3x260

We provide general information on screws but do not advise any specific type, since the decision on the right screws is solely responsibility of buyer. The information provided in this table is intended to serve as a helpful guide for selecting screws for specific sandwich panels. However, the final selection of the appropriate screws should be made by a qualified project designer. Trimo, including its subsidiaries, does not accept any responsibility or liability for damages, errors or inaccuracies in the information provided in this table.

\*The structural thickness ranges provided in this table are simplified and represent a general overlap between different screws. These ranges should not be used as definitive characteristics for any specific screw. For accurate and detailed specifications, please refer to the individual data sheets for each screw type.

# TRIMOTERM FTV HL Screws

Df = T - 15 mm  
Df ... Element thickness where screw is installed  
T ... Element thickness



## SELF DRILLING SCREWS

Substructure thickness	2 mm < t < 5mm		4 mm < t < 12 mm	
Panel thickness [T]	ID	name	ID	name
<b>FTV HL 50</b>	30023341	EJOT JT3-6-5,5x 70	30023751	EJOT JT3-12-5,5x 78
	N/D	SFS SX5-5,5x78 [A2]	N/D	SFS SX16-5,8x90 [A4]
<b>FTV HL 60</b>	30023341	EJOT JT3-6-5,5x 70	30023751	EJOT JT3-12-5,5x 78
	N/D	SFS SX5-5,5x78 [A2]	N/D	SFS SX16-5,8x90 [A4]
<b>FTV HL 80</b>	30023413	EJOT JT3-6-5,5x 90	30023757	EJOT JT3-12-5,5x 98
	N/D	SFS SX5-6,3x100 [A4]	N/D	SFS SX16-5,8x110 [A4]
<b>FTV HL 100</b>	30023414	EJOT JT3-6-5,5x110	30023591	EJOT JT3-12-5,5x118
	N/D	SFS SX5-6,3x120 [A4]	N/D	SFS SX16-5,8x130 [A4]
<b>FTV HL 120</b>	30023416	EJOT JT3-6-5,5x130	30023592	EJOT JT3-12-5,5x138
	N/D	SFS SX5-6,3x140 [A4]	N/D	SFS SX16-5,8x150 [A4]
<b>FTV HL 133</b>	30023468	EJOT JT3-6-5,5x150	30023410	EJOT JT3-12-5,5x158
	N/D	SFS SX5-6,3x160 [A4]	N/D	SFS SX16-5,8x170 [A4]
<b>FTV HL 150</b>	30023471	EJOT JT3-6-5,5x170	30023409	EJOT JT3-12-5,5x178
	N/D	SFS SX5-6,3x160 [A4]	N/D	SFS SX16-5,8x170 [A4]
<b>FTV HL 172</b>	30023607	EJOT JT3-6-5,5x190	30023758	EJOT JT3-12-5,5x198
	N/D	SFS SX5-6,3x190 [A4]	N/D	SFS SX16-5,8x200 [A4]
<b>FTV HL 200</b>	N/D	EJOT JT3-18-5,5x235	N/D	EJOT JT3-18-5,5x235
	N/D	SFS SX5-6,3x220 [A4]	N/D	SFS SX16-5,8x230 [A4]
<b>FTV HL 220</b>	30036432	EJOT JT3-18-5,5x275	30036432	EJOT JT3-18-5,5x275
	N/D	SFS SX5-6,3x250 [A4]	N/D	SFS SX16-5,8x260 [A4]
<b>FTV HL 240</b>	30036432	EJOT JT3-18-5,5x275	30036432	EJOT JT3-18-5,5x275
	N/D	SFS SX5-6,3x290 [A4]	N/D	SFS SX16-5,8x260 [A4]
<b>FTV HL 250</b>	30036432	EJOT JT3-18-5,5x275	30036432	EJOT JT3-18-5,5x275
	N/D	SFS SX5-6,3x290 [A4]	N/D	SFS SX16-5,8x300 [A4]

## SELF TAPING SCREWS

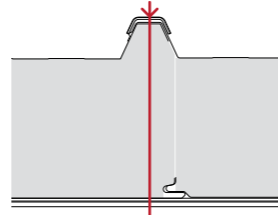
Substructure thickness	2 mm < t			
Panel thickness [T]	ID	name	ID	name
<b>FTV HL 50</b>	30035920	EJOT JZ5 6,3x53	N/D	SFS TDB-S-6,3x60
<b>FTV HL 60</b>	30035921	EJOT JZ5 6,3x63	N/D	SFS TDB-S-6,3x80
<b>FTV HL 80</b>	30035922	EJOT JZ5 6,3x83	N/D	SFS TDB-S-6,3x100
<b>FTV HL 100</b>	30035924	EJOT JZ5 6,3x103	N/D	SFS TDB-S-6,3x120
<b>FTV HL 120</b>	30035926	EJOT JZ5 6,3x123	N/D	SFS TDB-S-6,3x140
<b>FTV HL 133</b>	30035928	EJOT JZ5 6,3x143	N/D	SFS TDB-S-6,3x140
<b>FTV HL 150</b>	30035929	EJOT JZ5 6,3x153	N/D	SFS TDB-S-6,3x160
<b>FTV HL 172</b>	30035931	EJOT JZ5 6,3x183	N/D	SFS TDB-S-6,3x180
<b>FTV HL 200</b>	30035932	EJOT JZ5 6,3x203	N/D	SFS TDB-S-6,3x220
<b>FTV HL 220</b>	30035933	EJOT JZ5 6,3x223	N/D	SFS TDB-S-6,3x260
<b>FTV HL 240</b>	30035934	EJOT JZ5 6,3x243	N/D	SFS TDB-S-6,3x260
<b>FTV HL 250</b>	30035935	EJOT JZ5 6,3x263	N/D	SFS TDB-S-6,3x260

We provide general information on screws but do not advise any specific type, since the decision on the right screws is solely responsibility of buyer. The information provided in this table is intended to serve as a helpful guide for selecting screws for specific sandwich panels. However, the final selection of the appropriate screws should be made by a qualified project designer. Trimo, including its subsidiaries, does not accept any responsibility or liability for damages, errors or inaccuracies in the information provided in this table.

\*The structural thickness ranges provided in this table are simplified and represent a general overlap between different screws. These ranges should not be used as definitive characteristics for any specific screw. For accurate and detailed specifications, please refer to the individual data sheets for each screw type.

# TRIMOTERM SNV Screws

**Df = T + 40 mm**  
 Df ... Element thickness where screw is installed  
 T ... Element thickness



## SELF DRILLING SCREWS

Substructure thickness	2 mm < t < 5 mm		4 mm < t < 12 mm	
Panel thickness [T]	ID	name	ID	name
<b>SNV 60</b>	30024462	EJOT JT3-D-6H-5,5/6,3x127 E19	30024463	EJOT JT3-D-12H-5,5/6,3x135 E19
	30032810	SFS SXC5-S19 6.3x140 [A2]	N/D	SFS SXC16-S19 5.8x150 [A2]
<b>SNV 80</b>	30027300	EJOT JT3-D-6H-5,5/6,3x147 E19	30027301	EJOT JT3-D-12H-5,5/6,3x155 E19
	30032051	SFS SXC5-S19-6,3x160 [A2]	N/D	SFS SXC16-S19 5.8x170 [A2]
<b>SNV 100</b>	30024990	EJOT JT3-D-6H-5,5/6,3x167 E19	30027306	EJOT JT3-D-12H-5,5/6,3x175 E19
	30032383	SFS SXC5-S19-6,3x190 [A2]	N/D	SFS SXC16-S19 5.8x200 [A2]
<b>SNV 120</b>	30011562	EJOT JT3-D-6H-5,5/6,3x197 E19	30027305	EJOT JT3-D-12H-5,5/6,3x195 E19
	30031695	SFS SXC5-S19-6,3x220 [A2]	N/D	SFS SXC16-S19 5.8x200 [A2]
<b>SNV 150</b>	30023821	EJOT JT3-D-6H-5,5/6,3x237 E19	30024060	EJOT JT3-D-12H-5,5/6,3x245 E19
	30032841	SFS SXC5-S19 6.3x250 [A2]	N/D	SFS SXC16-S19 5.8x230 [A2]
<b>SNV 172</b>	30023821	EJOT JT3-D-6H-5,5/6,3x237 E19	30024060	EJOT JT3-D-12H-5,5/6,3x245 E19
	30032841	SFS SXC5-S19 6.3x250 [A2]	N/D	SFS SXC16-S19 5.8x260 [A2]
<b>SNV 200</b>	30027310	EJOT JT3-D-6H-5,5/6,3x267 E19	30027304	EJOT JT3-D-12H-5,5/6,3x275 E19
	30032842	SFS SXC5-S19 6.3x290 [A2]	N/D	SFS SXC16-S19 5.8x300 [A2]
<b>SNV 220</b>	/	/	30024102	EJOT JT3-D-12H-5,5/6,3x300 E19
	30032842	SFS SXC5-S19 6.3x290 [A2]	N/D	SFS SXC16-S19 5.8x300 [A2]
<b>SNV 240</b>	/	/	/	/
	/	/	N/D	SFS SXC16-S19 5.8x355 [A4]

## SELF TAPING SCREWS

Substructure thickness	2 mm < t			
Panel thickness [T]	ID	name	ID	name
<b>SNV 60</b>	30035906	JZ5 6,3x123 E19	N/D	SFS TDB-S-S19-6,3x120
<b>SNV 80</b>	30035908	JZ5 6,3x143 E19	N/D	SFS TDB-S-S19-6,3x140
<b>SNV 100</b>	30035910	JZ5 6,3x163 E19	N/D	SFS TDB-S-S19-6,3x160
<b>SNV 120</b>	30035911	JZ5 6,3x183 E19	N/D	SFS TDB-S-S19-6,3x180
<b>SNV 150</b>	30035914	JZ5 6,3x223 E19	N/D	SFS TDB-S-S19-6,3x220
<b>SNV 172</b>	30035915	JZ5 6,3x243 E19	N/D	SFS TDB-S-S19-6,3x260
<b>SNV 200</b>	30035916	JZ5 6,3x263 E19	N/D	SFS TDB-S-S19-6,3x260

We provide general information on screws but do not advise any specific type, since the decision on the right screws is solely responsibility of buyer.

The information provided in this table is intended to serve as a helpful guide for selecting screws for specific sandwich panels. However, the final selection of the appropriate screws should be made by a qualified project designer. Trimo, including its subsidiaries, does not accept any responsibility or liability for damages, errors or inaccuracies in the information provided in this table.

\*The structural thickness ranges provided in this table are simplified and represent a general overlap between different screws. These ranges should not be used as definitive characteristics for any specific screw. For accurate and detailed specifications, please refer to the individual data sheets for each screw type.

## Company profile

Trimo is a high-quality global supplier of innovative, flexible, functional, energy-efficient architectural building envelope solutions. The company places its customers at the focus of its operations by understanding their needs and serving them with highest level of service and product quality. Trimo's work is underlined by the company's innovation, and core values of partnership, reliability, responsibility, trust, innovation, and passion.

# Notes

.....

.....

# HEADQUARTERS

TRIMO D.O.O.  
PRIJATELJEVA CESTA 12,  
8210 TREBNJE, SLOVENIA  
T: +386 (0)7 34 60 200  
F: +386 (0)7 34 60 127  
TRIMO@TRIMO-GROUP.COM  
WWW.TRIMO-GROUP.COM

# GLOBAL PRESENCE

SCAN ME

